

Bridging the Gaps

RET

RET.
Bridging
the Gaps
in Africa.

SINGER



2022

ANNUAL REPORT

&

FINANCIAL STATEMENTS

RET Alliance

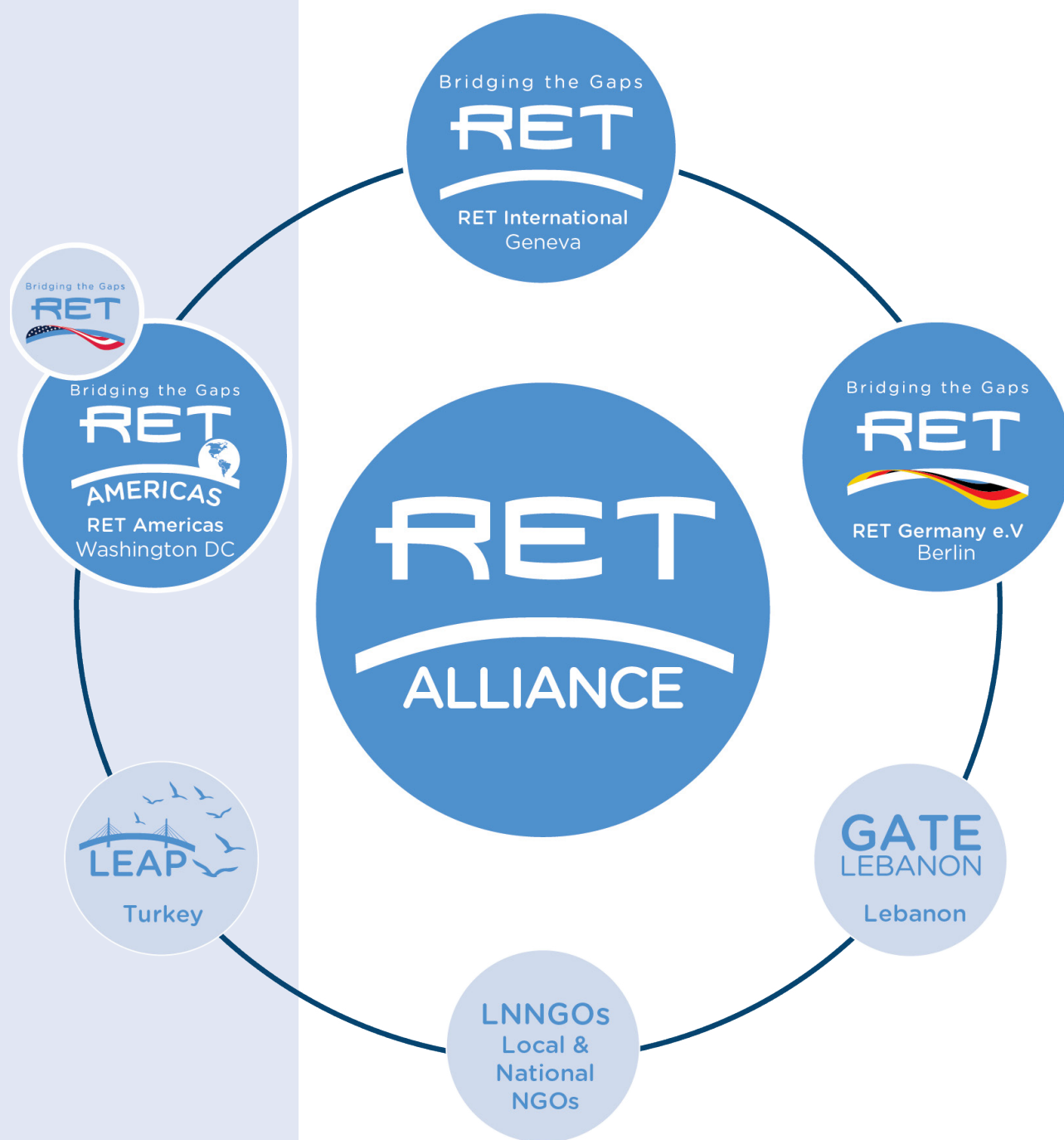
Bridging the Gaps



RET International Annual Report & Audited Financial Statements 2022
Copyright RET 2022©

RET International
Geneva, Switzerland

All pictures by RET ©
info@theRET.org
theRET.org - RETGermany.de - RETAmericas.org

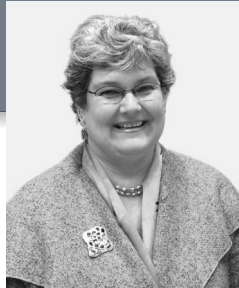


RET. Bridging the Gaps in Africa. The Americas. Asia. Europe. The Middle East.
www.theRET.org
 © 2023

CONTENTS

ANNUAL REPORT & FINANCIAL STATEMENTS 2022

• A Letter From Our CEO	p.6
• RET's Mission	p.9
• RET's Impact	p.10
• Where We Worked	p.12
• RET's Commitment to the SDGs	p.13
RET's Work by Country	p.14
RET International	p.14
• Belize	p.15
• Burundi	p.19
• Colombia	p.23
• Costa Rica	p.27
• Ecuador	p.33
• Mexico	p.41
• Panama	p.45
• Türkiye	p.49
• Venezuela	p.53
RET Germany	p.56
• DRC	p.57
• Lebanon	p.61
• Mali	p.65
• Niger	p.69
RET Americas	p.72
• Peru	p.73
RET Management	p.76
Donors & Partners	p.60
Institutional Engagement	p.62
Financial Statements	p.xx
Balance Sheet	p.xx
Statement of Financial Performance	p.xx
Key Contact Information	p.xx



Dear friends of RET,

2022 saw the world change in many profound ways. We began to emerge from the shadows of the pandemic, at long last, but we were reminded of the fragility of peace and the sustained need for organizations like RET to provide humanitarian assistance and serve vulnerable populations in 18 countries.

The outbreak of war in Ukraine both shocked and polarized the world in a way we have not seen in decades. The conflict has taken a severe toll on the people of Ukraine, with UNHCR estimating that it has increased the global number of refugees to 32 million and the total number of internally displaced persons (IDPs) to over 100 million.

At the same time, it has had ripple effects across the globe: From the disruption of vital food supplies to the redistribution of aid and humanitarian support. We have also seen governments and institutional donors divert their funding from other parts of the world. While this has increased the challenges for organizations like RET, we will continue to alleviate suffering and provide critical protection and education programs in Africa, the Middle East, and Latin America.

Meanwhile, we are seeing other global challenges like climate change intensify as extreme, prolonged heat waves, wildfires, and floods not only threaten lives but food security and livelihoods. To mitigate this, our natural disaster and risk management projects in Latin America are building capacity in Mexico, Panama, Costa Rica, and other countries by bringing together local governments, civil society organizations, and communities to strengthen preparedness plans in the event of an emergency. At the same time, food security and nutrition programs in DRC, Burundi, Lebanon, and other countries are working to support local farmers by educating on the latest agriculture techniques, as well as providing access to seeds, equipment, and capital.

While RET remains impartial, neutral, and independent, our work is not unaffected by changing political conditions. The crisis in Venezuela has had an effect regionally and across the hemisphere, as migrants continue to leave the country. This has impacted neighboring countries like Ecuador, Peru, and Panama, where we are active. However, our impartial and neutral reputation has allowed us to continue working in countries and regions where other organizations cannot.

Our extensive country teams across Latin America, specifically Venezuela and Ecuador, continue to assist vulnerable migrant populations – providing innovative educational programs to youth, educating populations on sexual and gender-based violence, and attending to migrants traversing the Darién Gap. We’ve also continued our multi-sector approach, implementing protection initiatives, working in health and WASH, food security, and projects combatting trafficking in persons.

In 2022, we also expanded operations in West Africa, specifically in the Sahel region, with teams in Niger and recently launched operations in Mali focused on food security, nutrition, agriculture, and peacebuilding - this, in addition to our presence in Mauritania, where we have been operating since 2019 and our long-running programs in Burundi and DRC.

Over the past year, we have also continued to nurture and grow our relationships with UN agencies like the High Commission for Refugees (UNHCR), the World Food Programme (WFP), the United Nations International Children’s Emergency Fund (UNICEF), UNESCO, Education Cannot Wait (ECW), as well as the Population Fund (UNFPA), UN Women, and the UN Development Programme (UNDP). We are grateful for generous support from government donors like the U.S. Department of State, USAID, the UK Foreign Commonwealth and Development Office, the German Federal Foreign Office, and the German Development Ministry (BMZ). We thank additional government donors in Switzerland, Liechtenstein, Belgium, Luxembourg, Canada, Colombia, and Norway, among others.

We believe in our work and the power of partnerships and collaboration, especially in addressing multifaceted humanitarian challenges. And looking forward to 2023, and despite the uncertainty across the globe, we’ll continue this collaborative approach to working in fragile environments – it’s been our mission for over two decades, and it continues to be where women, girls, and youth need us the most.

Zeynep Gündüz
President and CEO

RET.

Bridging the Gaps in Africa.
The Americas. Asia. Europe.
The Middle East.



RET'S MISSION

Since our founding in 2000, RET has worked in more than 34 countries, implementing over 400 projects, providing critical protection and education programs to build the resilience and self-reliance of participants and program participants. Our mission is to alleviate suffering and catalyze sustainable development in crises, conflicts, and fragile contexts.

We provide humanitarian assistance during emergencies, in protracted crises, and in fragile environments, which can alleviate the deepest sufferings. At the same time, by providing the tools to become self-reliant, provide for their families, and become actors of positive social change, we build people's resilience.

We work with groups made vulnerable by violence, armed conflicts, and disasters – from refugee adolescents and youth in refugee camps to displaced communities in urban and rural settings.

We are amongst the leading NGOs in most crisis and post-conflict contexts to provide tailor-made solutions and relevant programs to bridge the gaps and respond to the real needs and challenges of the communities.



**“Education should be a promise,
not a dream.”**

– Sadako Ogata, Founder of RET (1927-2019)

- Where We Work Today
- Where We've Recently Worked
- Where We're Ready to Work (Countries of Concern)

RET'S IMPACT SINCE FOUNDING

- > **34** Countries
- > **425** Projects
- > **1,600** Schools and women's centers
- > **2.4 million** Program participants
- > **55%** Women participants
- > **24 million** Lives impacted by RET
- > **257 million** USD channeled to youth and women

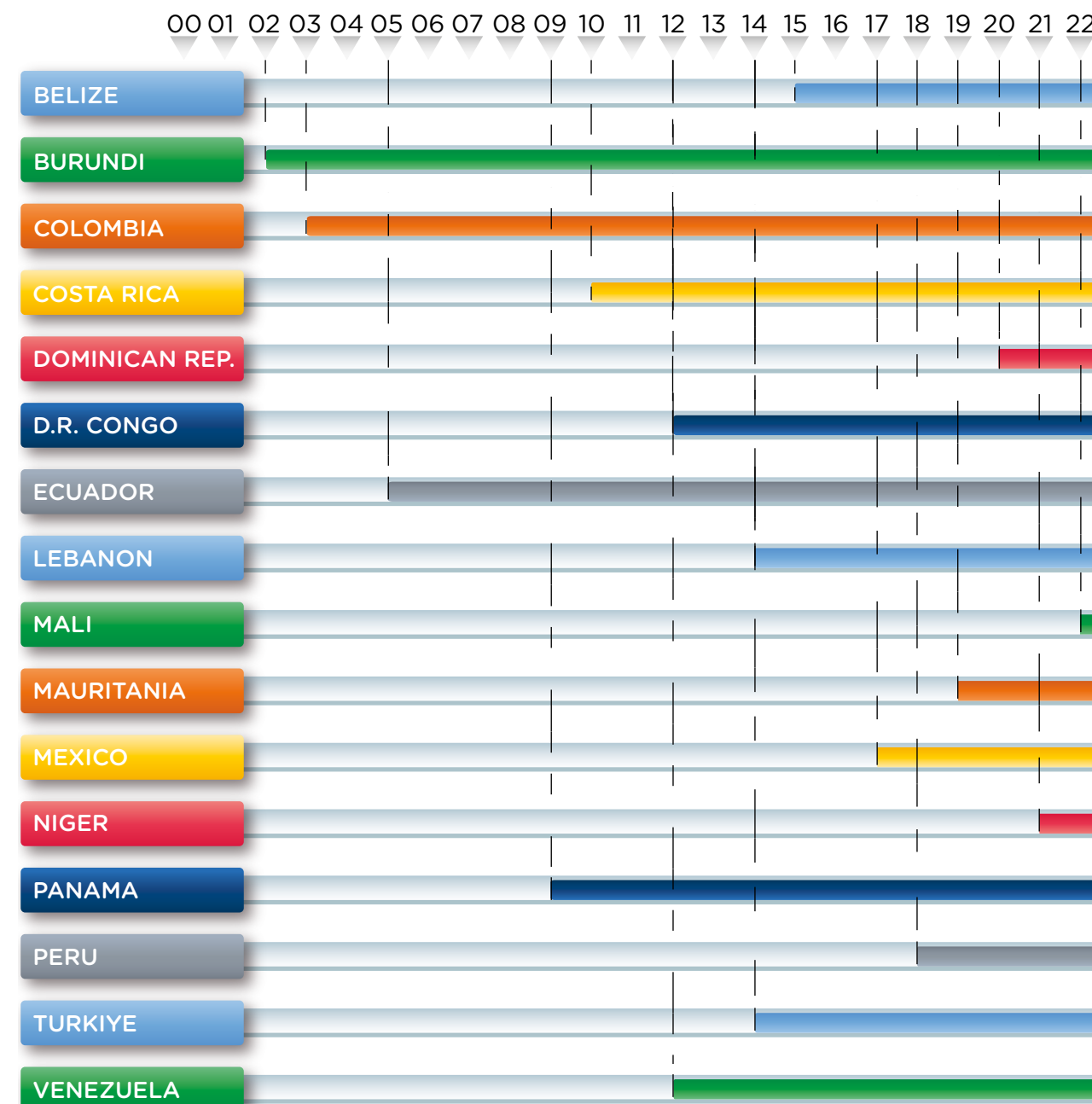
RET'S IMPACT IN 2022

- > **18** Countries
- > **106K** Program participants
- > **25** Projects
- > **2.12 million** Lives impacted by RET

2022 SNAPSHOT

WHERE WE WORKED

RET had active operations in 15 countries in 2022.
In some, we have been bridging the gaps for over a decade.



OUR COMMITMENT TO THE SDGs

The Sustainable Development Goals (SDGs) were adopted by the United Nations (UN) in 2015, serving as a global call to action to – among other aims – end poverty, protect the planet, and ensure that by 2030, all people enjoy peace and prosperity.

RET is committed to helping achieve these ambitious goals. From Quality Education (SDG 4) to Gender Equality (SDG 5) and Reduced Inequalities (SDG 10), many of our projects cut across sectors and goals. As you'll see throughout this report, each country team and the projects they're implementing are doing their part to help reach these goals.



RET'S WORK BY COUNTRY

RET International

> Belize

- Capital: Belmopán City
- Population: 441,471
- GDP per capita: USD 6,968.40

2015
RET began operations

11
Projects

5K
Program
participants

Projects have focused on:



Democracy and governance
Institutional strengthening and public policy
advocacy, youth empowerment, youth civic
engagement



Economic growth and development
Business development, entrepreneurship,
vocational training



Health and WASH
Mental health and psychosocial support



Protection
Against human trafficking; child protection, gender-
based violence (GBV), refugee and asylum seekers

Belize is a Central American country and a neighbor to the Northern Territories region, which is comprised of El Salvador, Guatemala, Honduras, and Nicaragua. In recent years, large groups of people from this region have fled to Belize to seek refugee protection against violence in their own countries. Many of the refugees are vulnerable women and children taking this journey out of desperation, to flee violence and, in particular, gender-based violence. This violence primarily stems from gang activities and is exacerbated by the drug route forcing itself through Central America.

This influx has led to increased unemployment and decreased secondary school attendance rates, and created conditions ripe for similar violence to take hold locally, endangering the current opportunities that youth in the country are afforded.

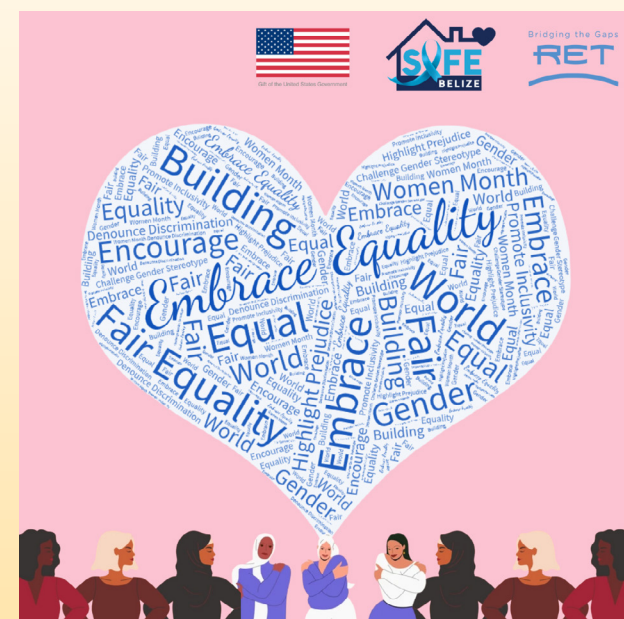
From mid 2022 through the end of the year, RET's local team in Belize supported UNICEF in its work in existing IOM/UNHCR hubs in migrant community by facilitating access to critical services for migrants and host communities. We provided gender-based violence (GBV) related services, life-skills sessions and psychosocial support services for children and parents, - and where relevant and needed - parenting support engagements. The project aimed to serve 600 children and adolescents and 900 adults in migrant resource centers in Belmopán, Bella Vista, and San Ignacio. ^[1]

Another ongoing social issue in Belize has been human trafficking, and local taxi operators, amongst other transportation systems, have been suspected of facilitating the transport of trafficking victims. In partnership with the Government of Belize and the Anti-Trafficking In Persons

(ATIPs) Council, RET is working to prioritize antitrafficking efforts within the transportation industry. We are building the capacity and knowledge of operators and local authority employees about human trafficking and applying formal procedures to identify victims of sex and labor trafficking among vulnerable groups. ^[2]

Beginning in 2021 and through 2025, RET's SAFE Belize program is working to build institutional capacity in Belize to combat human trafficking. We're working with shelters to create Standard Operation Procedures (SOP) and advocacy and awareness campaigns. We're also coordinating with the national government to identify and support newly organized groups that can help counter human trafficking by focusing on target groups and service deliverers as the actual policy implementers. ^[3]

[1] The project was implemented between June 2022 and December 2022, in partnership with the United Nations International Children's Emergency Fund (UNICEF).
 [2] This multi-year project (2022-2024) is funded by the US Embassy's Central American Regional Security Initiative - Economic Support Fund (CARSI-ESF).
 [3] SAFE Belize is funded by the Department of State, the Office to Monitor and Combat Trafficking in Persons (JTIP).



As part of the Safe Belize program's visibility efforts, RET's country team runs social media channels that provide localized information about how to report suspected instances, as well as signs to look out for and how to keep yourself and loved ones safe.



The projects being implemented in Belize contribute to the following Sustainable Development Goals:

- **SDG 4:** Quality Education
- **SDG 5:** Gender Equality
- **SDG 8:** Decent Work and Economic Growth
- **SDG 16:** Peace, Justice and Strong Institutions





> Burundi

- Capital: Gitega
- Population: 12.6 million
- GDP per capita: USD 238.40

2002
RET began operations

48
Projects

570K
Program
participants

Projects have focused on:



Basic infrastructure and equipment



Democracy and governance
Youth civic engagement, peacebuilding



Economic growth and development
Livelihoods and vocational training



Education and capacity building



Peace, stability, and transition

Located in central Africa between Rwanda, Tanzania, and the Democratic Republic of Congo (DRC), Burundi remains a fragile country following a series of conflicts that resulted in large-scale interethnic massacres and mass displacements. It is one of the poorest countries in the world, with the World Bank estimating that four out of ten people in the country live in extreme poverty.

After over a decade over civil war, a peace agreement was signed in 2000 and since then, over half a million Burundian refugees have returned to their country. Unfortunately, this has created tensions between returnees and those that stayed in the country post-conflict.

In order to contribute to finding sustainable solutions by enabling the effective integration of young repatriates into the Burundian school system, RET began taking action in favor of Burundian refugees living in Tanzania in 2001. Between 2001 and 2005, we provided direct support to all secondary schools offering the Burundian curriculum in Kirundi and French in Ngara camps in Kigoma, as well as those located in the unprotected refugee camps not covered by UNHCR, from where the majority of repatriates from 1972 originated, and who had adopted the Tanzanian curriculum in English and Swahili.

In 2022, we rolled out KOMEZA WIGE^[1] (“Continue Learning” in Kinyarwandese), a project that aims to improve education for crisis-affected children in Burundi. The program is ambitious in scope, targeting 300,000 children and prioritizing vulnerable groups. It includes rehabilitating classrooms, providing WASH facilities, reintegrating out-of-school children, offering cash-based assistance, and providing school meals. It also includes a teach training and life skills component.

Those life skills tie directly into another program: Enhancing income generation and self-sufficiency among young people.

RET has targeted over 2,000 young people ages 15–30, tapping into previous relationships with four youth centers and 24 youth associations, as well as new partnerships with four girls’ committees and 12 additional youth associations. The project is intended to provide vocational training and capacity building, as well as promotes access to credit and organizes forum discussions.

The vocational training includes certification to enhance youth’s employability and economic development. In addition to vocational training, French and English languages are offered to ensure that participants have the basic language skills to take advantage of all offered courses.^[2]

In 2022, in partnership with UNHCR, RET International implemented a project to empower refugees and contribute to the reduction of vulnerability factors through the creation of socio-economic opportunities for 15,000 Congolese, hosted in the five camps in Burundi (Kinama, Musasa, Bwagiriza, Kavumu, and Nyankanda).

We also continued supporting the Albert Einstein German Academic Refugee Initiative (DAFI), which is managed globally by UNHCR on behalf of the government of Germany. The program aims to provide higher education scholarships for refugees, with the long-term goal of creating self-reliant individuals that can actively contribute to the development and future reconstruction of their home countries.^[3]

[1] KOMEZA WIGE is led by World Vision and UNICEF, funded by Education Cannot Wait, and will be implemented through December 2024.

[2] This project was funded by Carpe Vitam International and implemented by RET in Burundi beginning in March 2022 through February 2023.

[3] The two projects (DAFI and Youth Empowerment) are funded by the UNHCR and implemented by RET in Burundi.

DAFI

BY THE NUMBERS, 2022

106

Students supported

14

Repatriated Burundians

92

Refugees

5

Private universities in which students are now enrolled



The projects being implemented in Burundi contribute to the following Sustainable Development Goals:

- **SDG 4:** Quality Education
- **SDG 5:** Gender Equality
- **SDG 8:** Decent Work and Economic Growth
- **SDG 9:** Industry, Innovation, and Infrastructure
- **SDG 16:** Peace, Justice, and Strong Institutions



> Colombia

- Capital: Bogota
- Population: 51.5 million
- GDP per capita: USD 6,630.30

2003

RET began operations

31

Projects

58.3K

Program
participants

Projects have focused on:



Democracy and governance

Youth civic empowerment, youth development



Economic growth and development

Self-reliance and livelihoods



Education and capacity building

Institutional strengthening



Basic infrastructure and equipment



Disaster risk reduction and management



Protection

Against gender-based violence (GBV)

Colombia is the largest Spanish-speaking country in South America and is bordered by Venezuela, Brazil, Ecuador, and Peru. The country has survived prolonged armed conflicts spanning a half century, and under which millions were subjected to violence, disappearances, forced displacement, and extrajudicial killings. A 2016 peace accord ended this conflict, but violence by armed groups and displacement has continued in different forms.

For two decades, RET has implemented programs to facilitate the transition of displaced youth and ensure the creation of sustainable livelihoods through education, training, and counseling. We have also provided programs to mitigate the effect of conflict and disasters on vulnerable young people and women. We have facilitated the opening of more than 400 facilities throughout 31 projects and have worked in areas affected by violence, disasters, and the influx of Venezuelan migrants, including: Bogota, Choco, Catatumbo, under the Cauca, Caqueta, Nariño, and Putumayo.

RET implemented the project “Addressing the basic humanitarian and protection needs of new internally displaced people in Colombia during 2019-2020” in several municipalities of the Catatumbo subregion with support of Global Affairs Canada, directly benefiting 5,306 people (56% women). This intervention enabled 1,557 people to strengthen their capacities to confront and prevent gender based violence (GBV), in addition to receiving family hygiene kits and sexual and reproductive health kits. We also designed the Psychosocial Methodology for the Care of Victims of the Conflict, the Practical Guide for the Prevention and Detection of GBV and the Guide for the Comprehensive Response to Sexual and GBV. In addition, we were able to incorporate an ethnic approach to empowerment by raising awareness of the rights and redefining the role of indigenous women of Bari in defense of the rights of their people using a gender perspective.

The economic crisis in Venezuela and the migration inflow it has instigated, the COVID-19 pandemic, and civil unrest over economic inequality and police violence, among other issues, have made RET’s mission in the country even more urgent.

We have worked directly with Venezuelan refugees and migrants in border areas along the six main migratory routes, addressing basic humanitarian and protection needs, as well as with internally displaced persons (IDPs) in the country. This has included psychosocial care for survivors of sexual abuse and gender-based violence (GBV), as well as training teachers, adapting infrastructure, and provisioning school supplies to better include displaced children and adolescents into the educational system.

RET works in close coordination with UNHCR and other actors such as IOM, UNFPA, WHO/PAHO, UNICEF, UNESCO, and with government in Colombia, like the Ministry of Health, Ombudsman’s Office, Ministry of Education and the Unit for the Attention and Integral Reparation of Victims.

Doing more, together

In Colombia, RET coordinates many projects and activities through its active membership in:

- Colombian Humanitarian Team, led by the United Nations
- Protection Cluster, led by UNHCR
- Early Recovery Cluster, led by UNDP
- Board of Education, led by UNICEF
- Interagency Group of Mixed Migratory Flows, led by UNHCR and IOM



The projects being implemented in Colombia contribute to the following Sustainable Development Goals:

- **SDG 4:** Quality Education
- **SDG 5:** Gender Equality
- **SDG 8:** Decent Work and Economic Growth
- **SDG 10:** Reduce Inequalities
- **SDG 16:** Peace, Justice and Strong Institutions
- **SDG 17:** Partnerships for the Goals





> Costa Rica

- Capital: San Jose
- Population: 5.2 million
- GDP per capita: USD 13,198.80

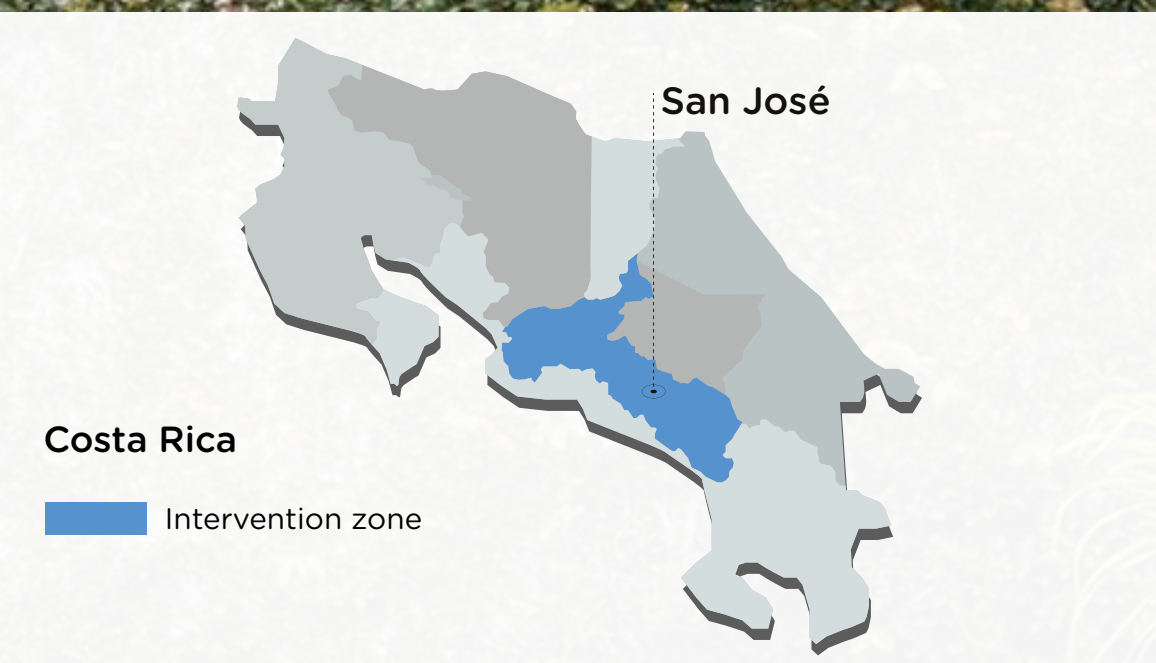
2010
RET began operations

40
Projects

140K
Program
participants

Projects have focused on:

-  Basic infrastructure and equipment
-  Disaster risk reduction and management
-  Education and capacity building
Post-primary education, including basic, tertiary, life and soft skills, and distance learning
-  Economic growth and development
Self-reliance and livelihoods, business development, and entrepreneurship
-  Peace, stability, and transition
Including community resilience
-  Protection
Gender-based violence (GBV) prevention and mitigation, response to forced and early marriage, child protection, legal support and human rights)
-  Health and WASH
Sexual and reproductive health programs



Costa Rica is a Latin American country with a stable and well-functioning democracy in a region where governance is often unpredictable. Despite its small size, the country hosts a large proportion of refugees from Colombia, as well from Honduras, El Salvador, Guatemala, Nicaragua, Cuba, and – since the onset of its economic crisis – Venezuela. According to UNHCR, the country hosted over 121,983 people of concern, including 9,613 refugees and 89,770 asylum-seekers (formalized claims). Since 2017, the country has experienced a significant increase in the number of asylum-seekers, mainly from Nicaragua and Venezuela.

RET worked with asylum-seekers and refugees, providing psychological care, case management, community outreach and shelter services.^[1]

We have been working tirelessly in Costa Rica since 2010, with the majority of beneficiaries (60%) being vulnerable women. Most recently, we have been working to strengthen local governments' capacity to prevent gender-based violence (GBV) and provide related support services. We've supported local government officials' training (TOT) to assist women with entrepreneurship initiatives, identifying business opportunities, business planning, and critical thinking. This project was rolled out across 14 municipalities: Curridabat, Montes de Oca, Moravia, La Union de Tres Rios, Desamparados, Alajuelita, Escazú, Mora, Belén de Heredia, Alajuela, San Jose, Tibas, Goicoechea and Santa Ana.^[2] Also this year, a new project was launched to work with state institutions to include methodologies for the prevention of gender based violence and thus strengthen the capacities of officials who provide services.^[3]

Over our time in the country, we have consolidated strong relationships with different governmental and non-governmental institutions, resulting in the trust of the State and civil society. We

have developed a solid relationship with not just the leaders of these institutions, but also staff at intermediate levels. These relationships have been particularly key as we embark on multi-country initiatives like regional comprehensive disaster risk management. Between 2020 and 2022 in Costa Rica, Panama, Mexico, and the Dominican Republic, we worked to strengthen disaster risk management at the local levels by providing technical assistance and knowledge exchange opportunities.^[4]

[1] This program was funded by UNHCR.

[2] This work was implemented in two projects (August 2018–July 2020 and August 2020–July 2022), and was funded by the International Narcotics and Law Enforcement Office (INL).

[3] This work was implemented in one project (September 2022–August 2025), and was funded by the the International Narcotics and Law Enforcement Office (INL).

[4] This regional initiative was funded by the United States Agency for International Development's Bureau of Humanitarian Services (USAID-BHA)



The projects being implemented in Costa Rica contribute to the following Sustainable Development Goals:

- **SDG 4:** Quality Education
- **SDG 5:** Gender Equality
- **SDG 8:** Decent Work and Economic Growth
- **SDG 10:** Reduce Inequalities
- **SDG 16:** Peace, Justice and Strong Institutions

> Dominican Republic

- Capital: Santo Domingo
- Population: 11.1 million
- GDP per capita: USD 10,120.60

2020 to 2022
RET ran operations

1
Project

159K
Professionals
trained

Projects have focused on:



Education and capacity building



Disaster risk reduction and management



DID YOU KNOW?

According to Agence Française de Développement, the Dominican Republic was ranked the 50th most vulnerable country to climate change in 2021.

The northeast of the country is frequently affected by floods, storms and mudslides, while the northwest faces steadily increasing temperatures and prolonged droughts, affecting agricultural production.

The Dominican Republic (often abbreviated DR) is a Caribbean nation situated the island of Hispaniola with its sole neighbor to the west, Haiti. According to the World Bank, the country has seen a sustained period of economic growth over the last 25 years, but more than 40% of its population lives below the poverty line. A third of the country's population is concentrated in its capitol, Santo Domingo, and its relative success has attracted many migrants from neighboring Haiti, with estimates ranging from 500,000 to 2 million. The area is also prone to natural disasters like the 2010 magnitude 7.0 earthquake.

RET's work consortium with Plan International, who was the project implementer, has been particularly timely, as the Dominican Republic was a part our multi-country regional efforts strengthen comprehensive disaster risk management at the local level. The objective of this multi-year project (2020-2022) was to provide technical assistance and knowledge exchange to strengthen the capacity for disaster risk management at the local level. ^[1]

The project targeted for sub-sectors:

1. Capacity building and training
2. Integration and enhancement within education systems and research
3. Policy and planning
4. Building community awareness

While the conclusion of our disaster risk management project saw the end of RET's operations in the Dominican Republic, we know that we have left the country more resilient than when we entered and remain ready to restart operations and provide local assistance if the opportunity arises.

[1] This program was funded by the Bureau of Humanitarian Assistance of the United States Agency for International Development's Bureau of Humanitarian Services (USAID-BHA)



The project being implemented in Dominican Republic contribute to the following Sustainable Development Goals:

SDG 13: Climate Action



> Ecuador

- Capital: Quito
- Population: 17.8 million
- GDP per capita: USD 6,391.30

2005

RET began operations

39

Projects

177K

Program
participants

Projects have focused on:



Economic growth and development
Business development and entrepreneurship, self-reliance, and socio-economic strengthening



Education and capacity building



Disaster risk reduction and management



Protection
Child protection, and prevention and response to early and forced marriage



Youth empowerment

Ecuador is a South American country that in recent years has been the recipient of displaced peoples from Colombia and Venezuela, its northern neighbor. Many of RET's projects have focused on reducing the education gap for refugees, migrants and host communities: from accessibility and safety to quality and post-primary education. The country's economy is slowly recovering from the pandemic, but informal work remains very common and there is often unequal access to public services. Ecuador is also highly vulnerable to the effects of climate change, with the arrival of the El Niño phenomenon, disaster risk management is also critical for any sustainable, long-term interventions in the country. At the same time the country is currently experiencing the worst insecurity crisis in its history, making it the most violent in the region.

In 2005, RET opened its first office in Quito by establishing channels for integration and promoting education. We provided opportunities to displaced youth – particularly Colombian refugees – to reduce the education gap by addressing accessibility, safety and quality, and post-primary education. We have been a part of the Working Group for Migrants and Refugees (GTRM) led by UNHCR and IOM since 2018 and in 2022, we co-led the Education Working Group (EWG) alongside UNESCO and UNICEF.

In 2022, RET also worked to identify children and adolescents outside the educational system in the provinces of Esmeraldas and Pichincha and re-integrate them. The project, utilizing RET's Inclusive Educational Communities approach, sought to reduce gaps in access to education by providing educational kits and monetary transfers to support school children and their families as part of the retention strategy.

This project targeted educational inclusion of 350 boys, girls and adolescents, through comprehensive services to families in human mobility, delivery of educational kits as well as school reinforcement and psychosocial support. Over 458 families in vulnerable situations saw their capacities to improve their children's inclusion and continuation in the educational system enhanced, and 175 families with greater vulnerability received CVA (monetary transfers) to address gaps and protection risks, as a strategy for school retention.^[1]

[1] This project was implemented between July and November 2022 in partnership with IOM in Ecuador.

RET has gone above and beyond in Ecuador



In 2022, we co-led the Education Working Group (EWG) alongside UNESCO and UNICEF.



RET has been a part of the Working Group for Migrants and Refugees (GTRM) led by UNHCR and IOM since 2018.



The projects being implemented in Ecuador contribute to the following Sustainable Development Goals:

- **SDG 4:** Quality Education
- **SDG 5:** Gender Equality
- **SDG 16:** Peace, Justice and Strong Institutions





> Mauritania

- Capital: Nuakchot
- Population: 4.6 million
- GDP per capita: USD 2,190.70

2019
RET began operations

7
Projects

53.6K
Program
participants

Projects have focused on:



Economic growth and development
Emphasis on livelihoods



Basic equipment and infrastructure



Education and capacity building



Gender equality and social inclusion



Protection



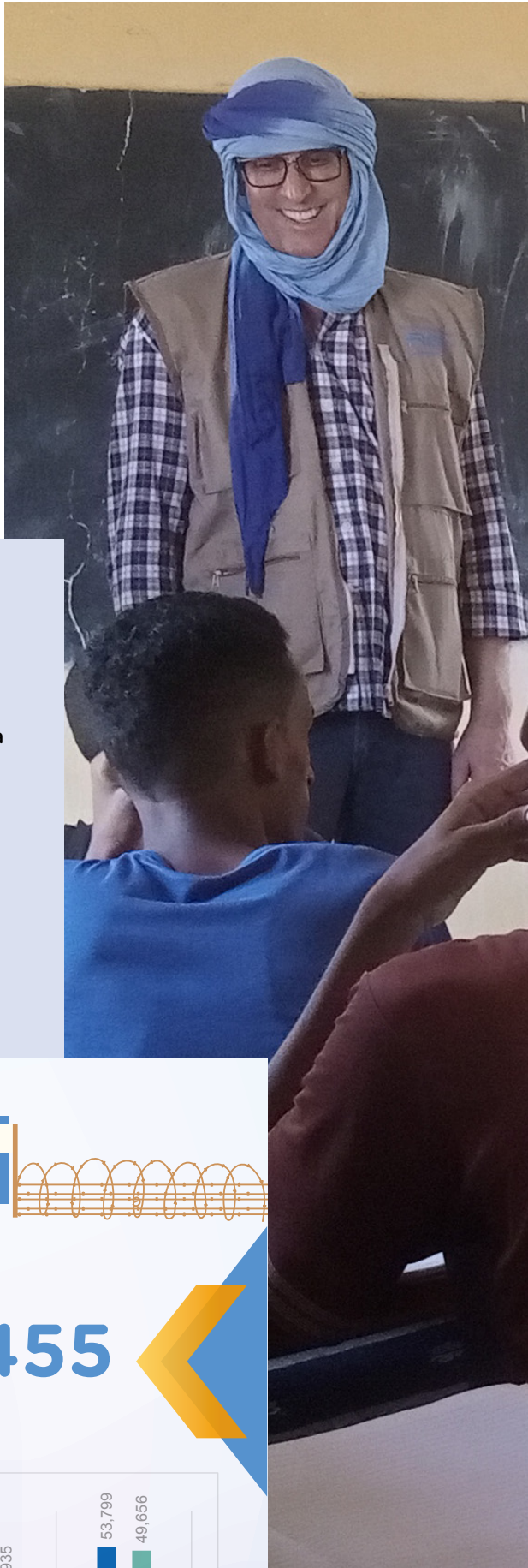
Nutrition and food security



Peace, stability, and transition

Mauritania is a northeastern African country that neighbors Western Sahara, Algeria, Mali, and Senegal. With 90% of its territory in the Sahara Desert, the majority of the Mauritians reside in or around the capital Nuakchot, on the coast. The country hosts over 2,500 urban refugees and asylum-seekers and almost 55,000 Malian refugees in and around Mbera Refugee Camp. Despite a peace agreement in Mali in 2015, large-scale Malian refugee returns are not expected due to persistent violence in northern and central Mali.

RET began operations in Mauritania in 2019 and has made enormous strides in that time. Nearly 70% of our program



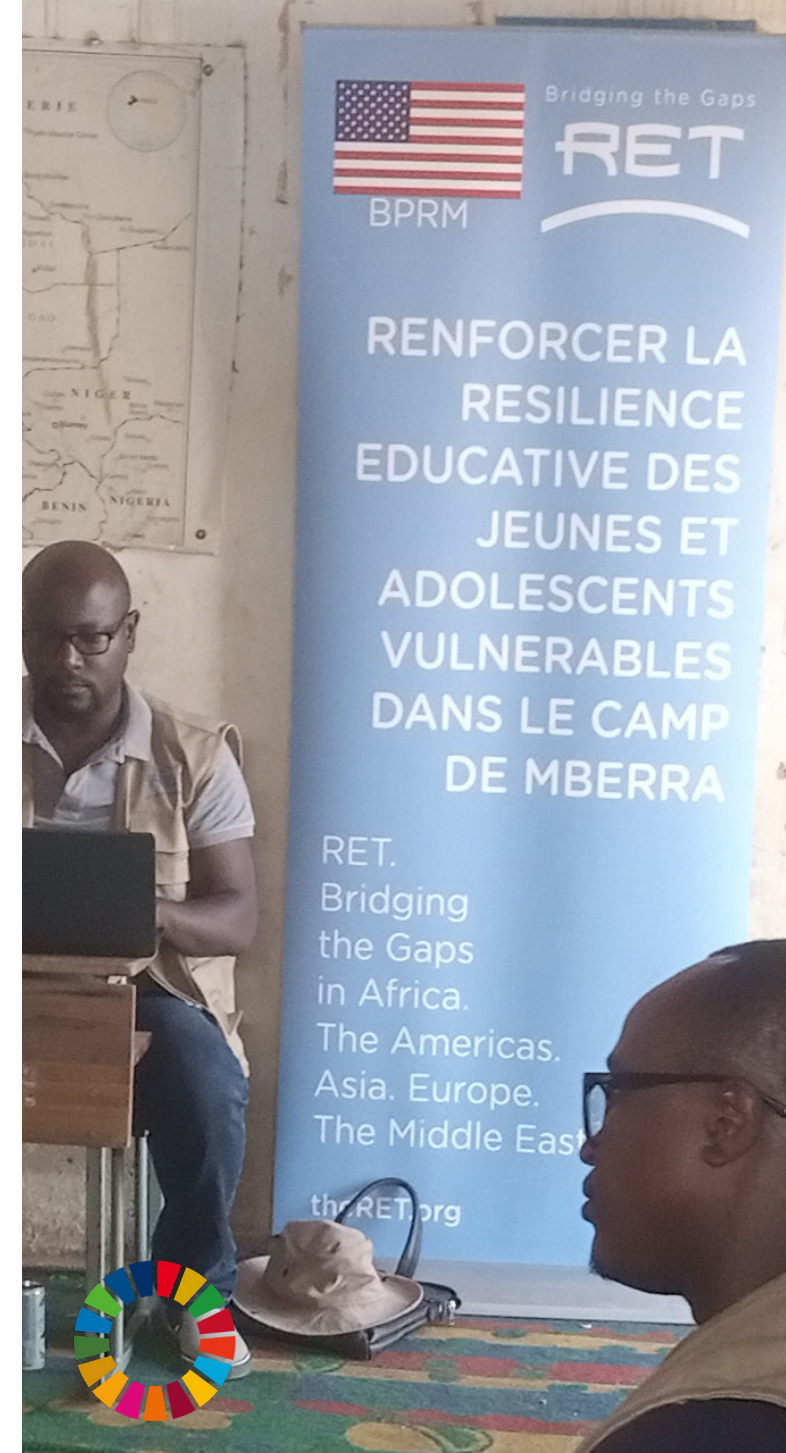
participants in the country are vulnerable women and girls, and we are the only service provider in the Mbera Camp with an active center dedicated to providing individual and group psychosocial support. We have created innovative programs for people with disabilities, especially children and their families, and we have also constructed a recreational and gaming space next to the youth center in Mbera Camp. And we were among the first NGOs to implement distance learning measures there during COVID-19. Today, we're continuing to provide catch-up courses through our Functional Literacy and Numeracy Program.

In Mauritania, there is a general lack of interest in schooling and a higher emphasis placed on entering the workforce, with the decision to end schooling being mainly taken by the family. That's why in the Hodh Chargui region (see map), we worked to re-integrate out-of-school children into the educational system and prevent school dropout by setting up a 9-month accelerate learning program in our alternative education centers.

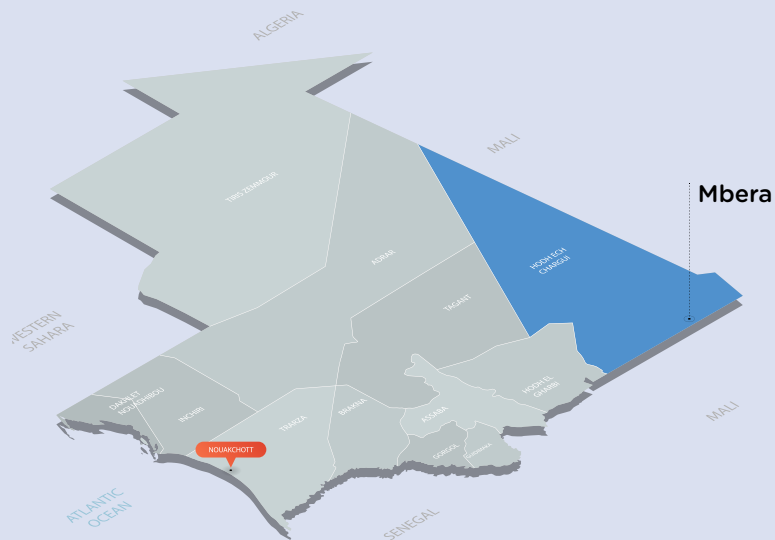
Quality education is the basis for developing sustainable, independent communities and stable societies. To this end, we supported schools by working with them to make their program management more effective and efficient and ultimately create a more inviting environment while also providing quality education.^[1]

Through 2023, we are working to build educational resilience in the Mbera Camp by providing secondary education, functional literacy, numeracy classes, and psychosocial support to out-of-school adolescents and youth. We anticipate reaching over 15,000 youth directly, indirectly benefitting over 40,000. Through this project, we'll enhance educational resilience, improve access to accredited education, and promote psychosocial well-being, as well as address gender-based violence issues and emphasizes inclusive and equitable educational opportunities.^[2]

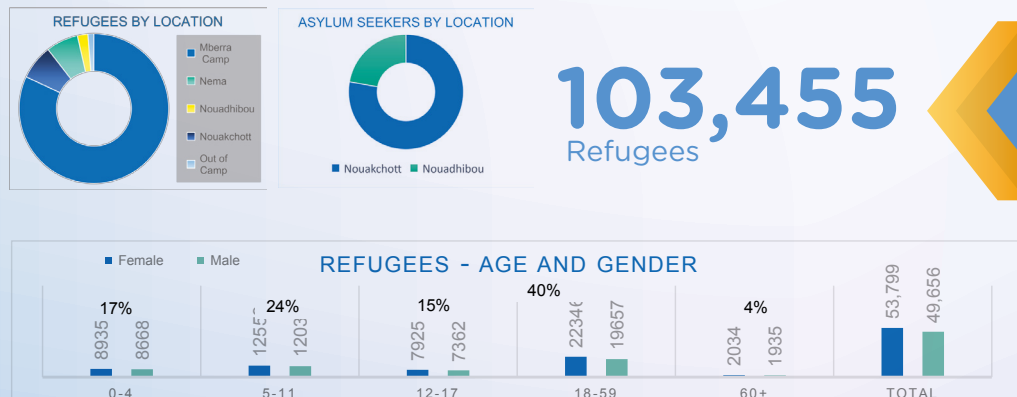
[1] This project was implemented between March 2021 and June 2022 in partnership with UNICEF in Mauritania.
 [2] This project is made possible through the generous support of the U.S. Department of State's Bureau for Population, Refugees and Migration (BPRM).



- The projects being implemented in Mauritania contribute to the following Sustainable Development Goals:
- **SDG 2:** Zero Hunger
 - **SDG 4:** Quality Education
 - **SDG 5:** Gender Equality
 - **SDG 8:** Decent Work and Economic Growth
 - **SDG 9:** Industry, Innovation, and Infrastructure
 - **SDG 10:** Reduced Inequalities
 - **SDG 16:** Peace, Justice, and Strong Institutions



RET has worked extensively in **Mbera Camp** which hosts the majority (81.5%) of refugees in Mauritania.
 (As of June 2023)





> Mexico

- Capital: Mexico City
- Population: 126,7 million
- GDP per capita: USD 11,091.30

2017
RET began operations

10
Projects

81K
Program
participants

Including 29,728
program participants
in 2022

Projects have focused on:



Disaster risk reduction and management



Economic growth and development
Including livelihoods programs



Education and capacity building



Gender equality and social inclusion



Nutrition and food security



Protection
Child protection, gender-based violence (GBV)
prevention and assistance

Spanning the distance between the United States and Latin America, Mexico is the tenth most populous nation in the world and thirteenth largest by area (761,618 square miles/1,972,550 square kilometers). It is characterized as a country of origin, transit, destination, and return as migrants, asylum seekers, refugees, and victims of human trafficking all transit through what has become one of the world's largest migration corridors.

Domestically, the IMF reports that the poverty rate has increased between 2018 and 2020 (from 41.9% to 43.9%), and gang and cartel violence continues to be a major issue throughout the country.

RET's previous work in Mexico has responded to problems brought forth by the unprecedented arrival of families to Mexico's southern border, fleeing gang-based violence in their home countries of Guatemala, El Salvador, Honduras, and Nicaragua. These groups lack of basic necessities, access to schools, are subjected to arduous refugee application processes, and are vulnerable to child labor and organized crime.

In 2022, our multi-year, regional disaster risk preparedness program continued



strengthening local entities and their Comprehensive Disaster Risk Management (CDRM) processes. This project is also being carried in Panama. In Mexico, it addresses already-identified CDRM priorities at the municipal level, as well as national and federal, in collaboration with the Coordinación Nacional de Protección Civil (CNPC, or National Civil Protection Coordination).^[1]

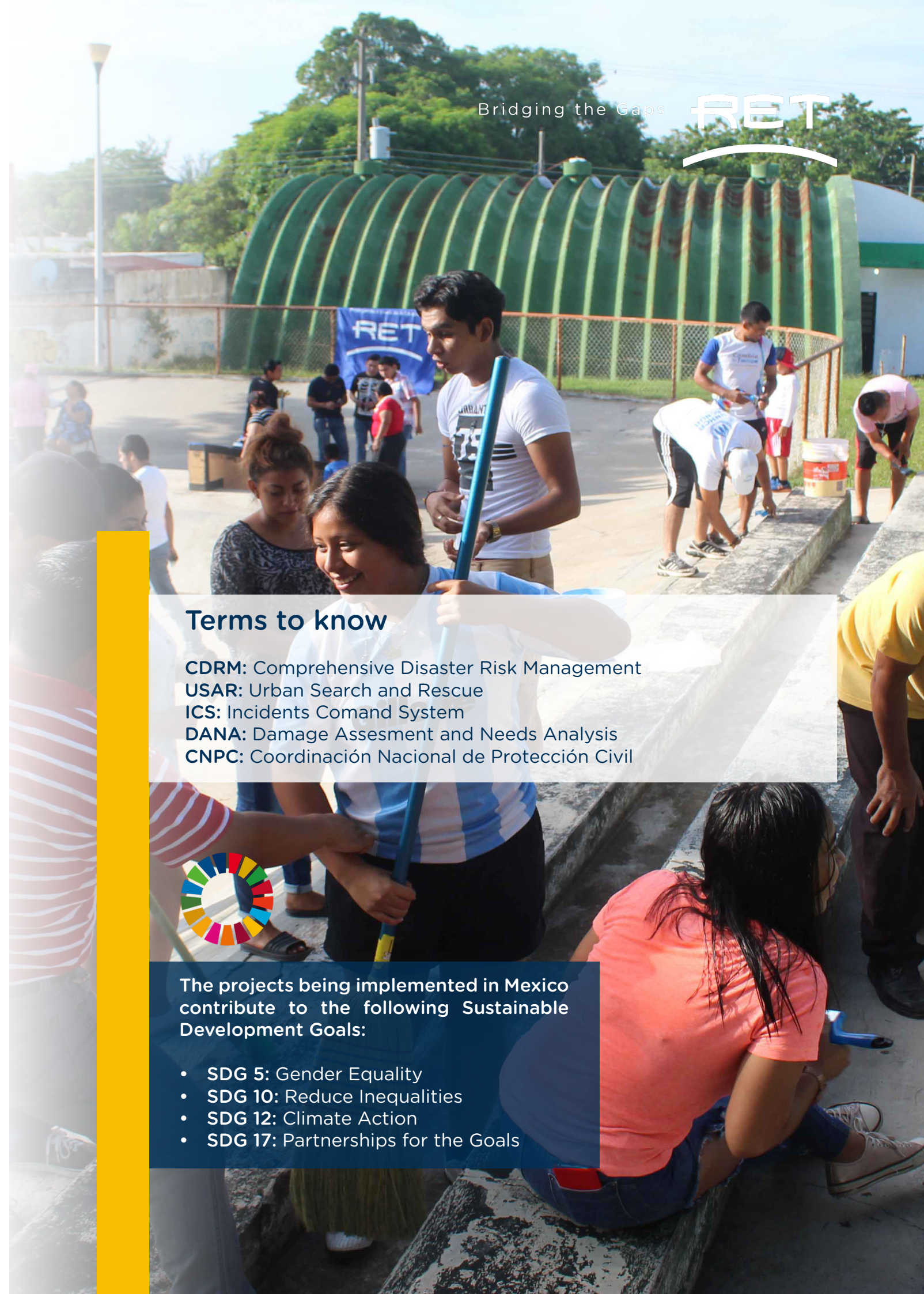
It has included:

- Strengthening situation room and operation centers at sites selected by the Government of Mexico and the implementation of an Action Plan agreed upon by the CNPC at sites selected by the Government of Mexico.
- The creation of a new Comprehensive Risk Management Committee (CRMC) for the standardization of the Damage Assessment and Needs Analysis methodology at the national level.).
- The dispersion of the Incidents Command System course (as well as the incorporation of the online mode) in three locations selected by the Government of Mexico
- The strengthening of Urban Search and Rescue (USAR) groups in the country through the creation and reaccreditation of various groups in the country.
- The design and development of a public awareness campaign to shift the paradigm from a civil protection culture (based on response) to one of CDRM (which takes a more holistic approach) amongst the key public, municipal, State and federal officials, with a focus on inclusivity through the intersectionality concept.

A related, and additional, project that also seeks to strengthen risk management at the local levels in Mexico also includes Costa Rica, Panama, and the Dominican Republic and will continue through 2023.^[2]

[1] This project will run through 2024 and is funded by the United States Agency for International Development's Bureau of Humanitarian Services (USAID-BHA) and implemented by RET in Panama and Mexico.

[2] This project is funded by the United States Agency for International Development's Bureau of Humanitarian Services (USAID-BHA) and implemented by RET in Costa Rica, Panama, and México, and in partnership with Plan International in the Dominican Republic.



Terms to know

CDRM: Comprehensive Disaster Risk Management

USAR: Urban Search and Rescue

ICS: Incidents Comand System

DANA: Damage Assesment and Needs Analysis

CNPC: Coordinación Nacional de Protección Civil

The projects being implemented in Mexico contribute to the following Sustainable Development Goals:

- **SDG 5:** Gender Equality
- **SDG 10:** Reduce Inequalities
- **SDG 12:** Climate Action
- **SDG 17:** Partnerships for the Goals



> Panama

- Capital: Panama City
- Population: 4.2 million
- GDP per capita (2021): USD 14,617.60

2009

RET began operations

49

Projects

138K

Program participants

Including
29,728 program
participants in
2022

Projects have focused on:



Disaster risk reduction and management
Including management of disasters and natural hazards,
and safety in school settings



Education and capacity building
Including basic, primary, and tertiary education



Health and WASH



Nutrition and food security



Peace, stability, and transition
Including peacebuilding and conflict resolution



Protection
Including child protection, and gender-based violence
(GBV) prevention and mitigation



Youth empowerment

Located on the isthmus between Latin and South America, Panama is a critically important country for RET and is home to the administrative center for our Latin America and Caribbean operations. The country also ranks high on the UNDP Human Development Index (approximately 0.8), on par with highly developed countries.

Because of its geographic location, though, Panama is a nexus for migration. Recent years have seen an influx of refugees from Colombia, as well as Venezuelan, Nicaraguan, Guatemalan, Salvadorian, and Honduran asylum seekers as they attempt to continue their journeys north to the United States. Unfortunately, this has been met by a growing wave of discriminatory and xenophobic attitudes and actions from public officials and host communities.

RET has been operating in Panama for over a decade, and in that time, has opened 20 facilities across our dozens of projects. Youth development has been an area of focus, and we have provided life and soft skills training to create resilience and improve livelihoods, violence and bullying prevention, promoted youth networking and advocated for issues of concern to youth. We also have promoted and supported youth development and meaningful participation at the community level by providing them with training, mentorship, and the space to be creative.

Beginning in 2021 and continuing through 2024, we are working to strengthen the disaster risk preparedness of local and national governments. At the local level, we are working in 16 municipalities: 14 in the Azuero region, within the Provinces of Los Santos and Herrera, one in the Province of Darien, and one in Ngäbe-Buglé Reserve, in the municipality of Besikó. In all areas, the objective is to promote the active participation of key actors in comprehensive disaster risk management (CDRM) processes in alignment with the public policies established by the National Government.^[1]

Since 2017, RET has been strengthening

its interventions on the border with Colombia in response to the migration crisis: from child protection and GBV and mental health services to nutrition, WASH, and protective environments. We have been primarily working with indigenous communities impacted by the migratory flow and in the migratory reception stations administered by the Panamanian government.^[2]

On a more localized level, in 2022, RET helped refugee, migrant, and host community children, adolescents and youth through our RETArte strategy to strengthen these group's leadership skills and their capacity as agents of social change in their communities. Activities were also carried out to promote citizen participation of indigenous adolescents and youth. In close coordination with government authorities, youth movements, and civil society organizations, the project featured workshops on multiple topics, including teamwork, argumentation, debate, leadership, Panamanian culture, art and theater, awareness of gender roles and masculinity, and prevention of gender-based violence. It also included recreational activities like artistic exploration.^[3]

[1] This project is being funded by the United States Agency for International Development's Bureau of Humanitarian Services (USAID-BHA)

[2] This project ran from December 2021 to December 2022 and was implemented in partnership with the UN International Children's Emergency Fund (UNICEF) in Panama

[3] This project ran from April to December 2022 and was implemented in partnership with the UN Refugee Agency (UNHCR) in Panama.

Bridging the Gaps



DID YOU KNOW?

RET has an administrative office in Panama which works closely with our Geneva headquarters to ensure smooth operations throughout Latin America and the Caribbean.



The projects being implemented in Panama contribute to the following Sustainable Development Goals:

- SDG 3: Good health and Well -Being
- SDG 4: Quality Education
- SDG 5: Gender Equality
- SDG 13: Climate Action
- SDG 16: Peace, Justice and Strong Institutions
- SDG 17: Partnerships for the Goals



> Türkiye

- Capital: Ankara
- Population: 84.8 million
- GDP per capita: USD 10,616.10

2014
RET began operations

39
Projects

302K
Program
participants

Projects have focused on:

-  Basic infrastructure and equipment
-  Economic growth and development
-  Education and capacity building
-  Gender equality and social inclusion
-  Peace, stability, and transition
Youth programs and social cohesion
-  Protection

Türkiye spans both Europe and Asia and serves as a gateway between the two continents. It shares an extensive border with Syria, and the civil war has spurred an exponential increase in the number of refugees in the country, with the current estimate at nearly 3 million and some 300,000 persons of concern from other nationalities. While the country boasts a large economy, a currency crisis and spiraling inflation have led to a fraught economic environment as the lira's value continues to decline.

RET has worked in Türkiye for nearly a decade and has an extensive history in the country. It also home to one of RET's administrative centers that oversees operations across Europe, the Middle East, Africa, and Asia. There, we have worked with refugees and local communities to improve social cohesion and provide opportunities for economic empowerment.

Between May 2021 and December 2022, we provided Turkish and English language courses in Madrin, Şanlıurfa, Ankara, and Çorum to help facilitate communication between the local and refugee communities. Dialogue helps establish trust, encourages value sharing, and ultimately, promotes social integration. ^[1]

In 2022, we initiated a project aimed at fostering resilience among non-Syrian refugee and vulnerable host communities in Keyseri. By increasing access to the labor market for women from both groups, promoting sexual and reproductive health initiatives, we aimed to create a greater – and lasting – social cohesion in the region. ^[2]

On a final note, Leap Natural Brands – a cooperative organization established with RET's assistance – continues to thrive. The brand promotes crafted natural products, handmade by women in Türkiye, and provides a sustainable source of income generation.

In 2021 and 2022, we focused on deploying additional vocational training to refugee and host communities, including techniques for vegetable and fruit drying based on an innovative and advanced industrial solar drying process that is environmentally friendly and delivers high-quality products. These products were then marketed for sale (retail and wholesale) through the Leap Brand's social media accounts, email marketing, as well as face-to-face and virtual meetings. ^[3]

[1] The project is funded by the Government of Liechtenstein and implemented by RET in partnership with LEAP in Türkiye.

[2] This project was funded by the UK Embassy in Ankara

[3] This project was funded by the German Federal Ministry for Economic Cooperation and Development (BMZ) – BENGÖ and implemented in consortium with RET Germany e.V. (INGO, Berlin) and LEAP in Türkiye.



Leap Natural's Instagram boasts over 90K followers.

Bridging the Gaps



The projects being implemented in Türkiye contribute to the following Sustainable Development Goals:

- **SDG 4:** Quality Education
- **SDG 5:** Gender Equality
- **SDG 8:** Decent Work and Economic Growth
- **SDG 9:** Industry, Innovation, and Infrastructure
- **SDG 10:** Reduced Inequalities
- **SDG 16:** Peace, Justice, and Strong Institution



> Venezuela

- Capital: Caracas
- Population: 28.3 million
- GDP per capita: USD 3.459,15

2012
RET began operations

23
Projects

315K
Program
participants

Including 60K
in 2022

Projects have focused on:



Education and capacity building



Health and WASH



Basic infrastructure and equipment



Nutrition and food security



Economic growth and development
Self-reliance and livelihoods, business development and
entrepreneurship support

Located on the northern coast of South America, Venezuela shares a border with Colombia to its west, Brazil to its south and Guyana to the east. Its 2022 population (28 million) is a notable decrease from its peak of nearly 31 million in 2016, attributed to the ongoing economic and political crises in the country. The IMF estimates that more than 7 million Venezuelans have left the country since 2015, with the vast majority of those settling in other Latin American countries.

RET has been active in Venezuela since 2012, and our presence there has been critical in helping stabilize communities and regions throughout the country over the past decade.

Our work in the country began with a regional program to support both Colombian refugees and local host communities, providing comprehensive care according to needs in psychosocial support, education, livelihoods, protection, socio-cultural initiatives and local capacity building, all with a focus on strengthening integration. It has grown to include health and sanitation, agriculture, nutrition and food security, disaster risk reduction, and gender, among other sectors.

Since 2021, we have been providing humanitarian assistance to families and children under the age of five with the delivery and distribution of food and training, as well as technical and specialized services. Our work has provided dry food baskets to families and educators, positively impacting 14,210 children in the states of Falcón and Trujillo. ^[1]

Last year, we also continued to provide humanitarian assistance to 10,516 people in Sucre and Bolivar states. We supported agricultural production through the provision of organic seeds, toolkits and irrigation systems, and training in resilient agro-ecological practices for family and school gardens to improve food self-sufficiency. This program also included the provision of food parcels and school meals distributed to the most vulnerable.

The program featured a sanitation and hygiene element with the rehabilitation

of community and school works, the provision of household hygiene and hand-washing kits to families, and the promotion of good hygiene practices among children and adolescents attending school. ^[2]

Meanwhile, our multi-sector approach helped 37,136 vulnerable people affected by the deepening of Venezuela's complex humanitarian crisis in five of the country's most vulnerable states (Bolívar, Táchira, Zulia, Miranda and Trujillo) by addressing the basic needs in agriculture, food security, food, health and water, sanitation and hygiene. Seven hundred families benefited from the distribution of organic seeds, agricultural materials and tools for the construction of family gardens, as well as strengthening their agricultural production and home gardens.

In the health sector, 16 health centers benefited from the supply of medicines and medical supplies and corrective maintenance work. Over 240 community health volunteers were trained, with a focus on community health promotion, and a further 160 health workers received professional skills training. Meanwhile, our reproductive health program reached 400 pregnant and lactating women who were educated on the importance of exclusive breastfeeding and improved care in health centers.

We also assisted over 10,000 people in gaining access to improved sanitation services thanks to RET's intervention, in partnership with communities, schools and health centers to distribute hand-washing and personal hygiene kits to families and in schools. Sixteen communities benefited from the rehabilitation of water facilities and formed water committees, and 20 schools benefited from the rehabilitation of water, hygiene and sanitation facilities and formed hygiene and hand-washing promotion clubs. ^[3]

[1] This project was funded by the World Food Programme (WFP) and implemented in RET Venezuela.

[2] The project was funded by the Swiss Development Cooperation (SDC) and the Swiss Embassy.

[3] This project was funded by the United States Agency for International Development's Bureau of Humanitarian Services (USAID-BHA) and implemented by RET in Venezuela.



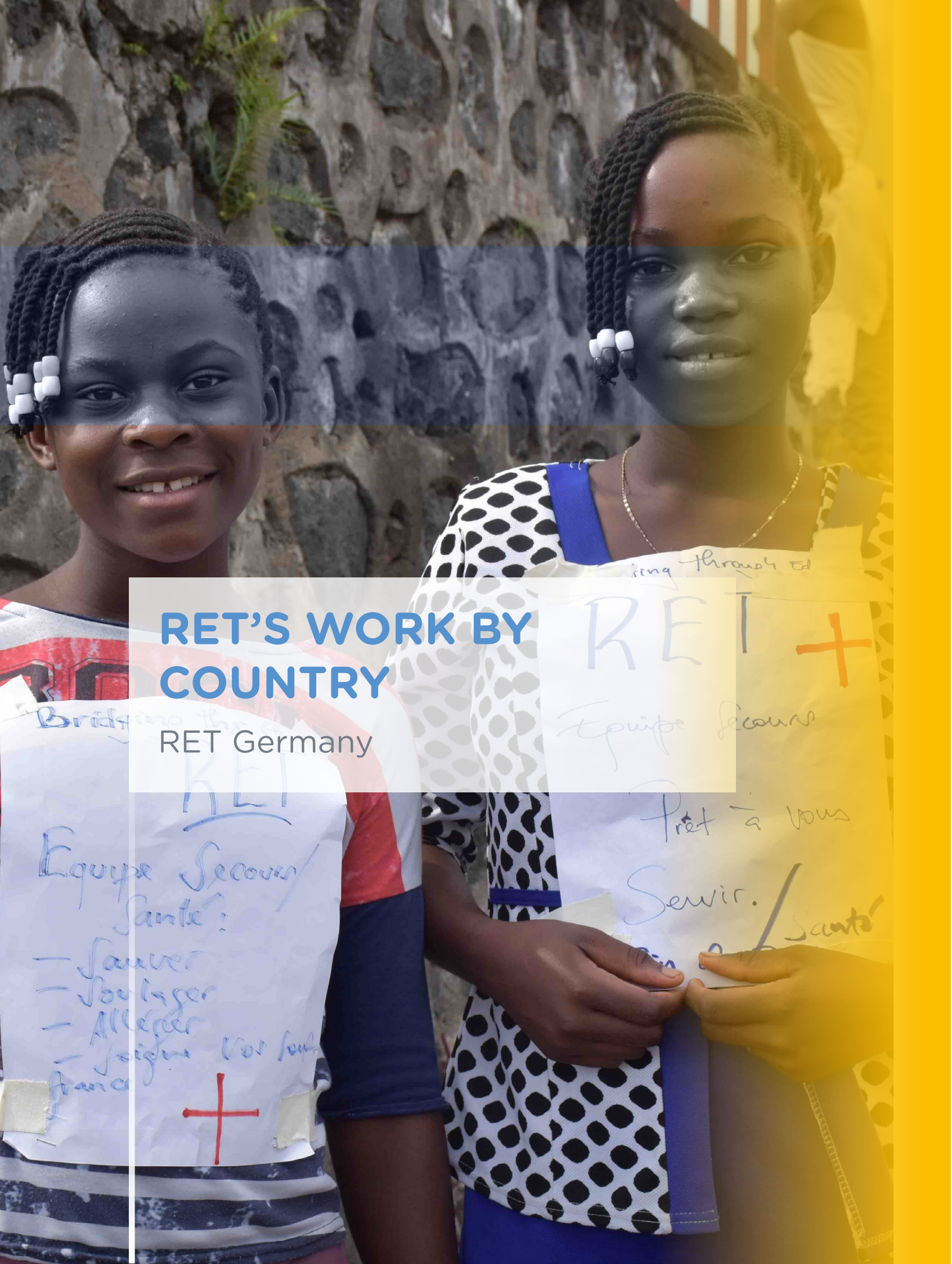
The projects being implemented in Venezuela contribute to the following Sustainable Development Goals:

- **SDG 2:** Zero Hunger
- **SDG 3:** Good health and Well-Being
- **SDG 4:** Quality Education
- **SDG 5:** Gender Equality
- **SDG 6:** Clean Water and Sanitation
- **SDG 8:** Decent Work and Economic Development
- **SDG 13:** Climate Action
- **SDG 16:** Peace, Justice and Strong Institutions
- **SDG 17:** Partnerships for the goals

What is “food security”?

According to the World Bank, food security means that one has, at all times, physical and economic access to sufficient, safe and, nutritious food. This food must also meet dietary needs and food preferences for an active and healthy life.

Even if your food intake is adequate today, you are still considered to be food insecure if you have inadequate access to food on a periodic basis, risking a deterioration of your nutritional status.



RET'S WORK BY COUNTRY

RET Germany

> DRC

- Capital: Kinshasa
- Population: 95.9 million
- GDP per capita: USD 586.50

2012 RET began operations | 19 Projects | 56K Program participants

Projects have focused on:

-  Democracy and governance
-  Economic growth and development
Vocational training
-  Education and capacity building
-  Nutrition and food security
-  Gender equality and social inclusion
-  Health and WASH
Mental health and psychosocial support
-  Peace, stability, and transition
Disarmament, demobilization and reintegration (DDR),
social cohesion and community stabilization
-  Protection

The Democratic Republic of Congo (often abbreviated as DRC or D.R. Congo) is a central African country and home to the largest Francophone population in the world. While extremely rich in natural resources, political instability, corruption, a lack of infrastructure – after centuries of colonial extraction – have left the sprawling country severely underdeveloped and over 60 million citizens living in extreme poverty (less than USD 2.15 per day).

While civil wars in the 1990s and early 2000s further destabilized the country, this widespread conflict eventually eased – but gave way to regional violence. Collectively, these conflicts have contributed to a fractious atmosphere and a number of challenging factors, including the large-scale use of child soldiers, forced labor, and frequently, violence against women and children.

Since 2012, RET has directly supported more than 55,765 participants in DRC (20% of them women) through 19 projects. This has included the critical but fraught effort to demobilize and rehabilitate some 1,177 ex-combatants, and in our estimation, has benefitted more than 557,650 indirect beneficiaries.

Among several active projects by RET in the country, a multi-year (2021-2024) undertaking has focused on improving the food security and nutrition situation in Ituri and North Kivu, to support peace and inclusive co-existence amongst the populations there. This has included efforts by RET to educate a wide demographic – from demobilized child soldiers and youth formerly associated with armed groups to the Indigenous Batwa population, female heads of households, and internally displaced persons (IDPs) – on how to self-produce food as small holder farmers and sustainably manage natural resources.

It is also intended to improve and promote peaceful relations between ethnic groups, as well as integrate stigmatized, vulnerable, and traumatized groups, specifically youth ex-combatants and the Batwa into the local community and economy. The project aims to reach 6,200 individuals over its lifecycle, and indirectly impact an addition 40,000.^[1]

[1] This project is funded by the German Federal Ministry for Economic Cooperation and Development (BMZ), and implemented in partnership with IPAPEL (Provincial Inspectorate of Agriculture, Fisheries, and Livestock), ACPEJ (Action des Ex-Combattants Pour l'Encadrement des Jeunes et la lutte contre l'enrôlement des enfants et les violence sexuelles basées sur le genre), FDAPID (Foyer de Développement pour l'Autopromotion des Pygmées et Indigènes Défavorisés), and PAP (Programme d'Appui au Développement des Population Forestières).



The projects being implemented in the Democratic Republic of Congo contribute to the following Sustainable Development Goals:

- **SDG 2:** Zero Hunger
- **SDG 3:** Good Health and Well-Being
- **SDG 4:** Quality Education
- **SDG 5:** Gender Equality
- **SDG 8:** Decent Work and Economic Growth
- **SDG 10:** Reduced Inequalities
- **SDG 16:** Peace, Justice, and Strong Institutions



> Lebanon

- Capital: Beirut
- Population: 5.6 million
- GDP per capita: USD 4,136.10

2014
RET began operations

15
Projects

810K
Program
participants

Projects have focused on:



Education and capacity building



Gender equality and social inclusion



Nutrition and food security



Peace, stability, and transition



Protection



Youth empowerment

Lebanon is a Mediterranean country bordering Israel to the south and Syria to its east and north. Civilizations in the country date back to 5,000 B.C.E., but in recent years, it has been significantly impacted by the Syrian civil war, which began in 2011. UNHCR estimates that Lebanon currently hosts 1.5 million refugees from Syria, and the influx has added pressure to an already fragile socio-economic situation, marred with political instability, inter-community tensions, coupled in some areas with sectarian divisions. Feelings of insecurity on both sides are causing increased mobility restrictions on refugees and segregation between communities. Add to this a declining economy, the exhaustion of social services, a political vacuum, a decrease in security, and a deteriorating quality of life, and the situation is clearly ripe for intervention.

In 2021, RET began work on a project targeting Lebanese and Syrian refugee households - with a specific emphasis on female-headed households - and communities in the rural areas of Ballbek-Hermel. Low productivity and profitability meant that these groups were facing food insecurity in addition to endangered livelihoods. RET has provided these communities with technical training, seeds and equipment provision, and training on integrated pest management (IPM) in order to increase their agricultural productivity, overall resilience, and promote peaceful co-existence.

The project will continue through 2024, and in that time, RET will:

- Support Lebanese fruit and fish farmers to increase their agricultural and aquacultural productivity. By improving their productivity, more opportunities are created for Syrian and Lebanese farmworkers.

- Assist with infrastructure rehabilitation: Construction a 2ml/3.2 km irrigation system in Al Qaa, ensuring safe water reaches the most vulnerable.
- Restore of two main agricultural roads, which will allow over 2,000 individuals better access to their farmland.
- Build the institutional capacity of six municipalities through training on local economic plans to promote Public-Private Partnership (PPP) investment in agribusiness and agriculture to increase local economic development projects.^[1]

[1] This transitional development project is funded by the German Federal Ministry for Economic Cooperation and Development (BMZ) and implemented in partnership with GATE Lebanon (local Lebanese non-governmental organization) and the Lebanese Agricultural Research Institute - LARI.



The projects being implemented in Lebanon contribute to the following Sustainable Development Goals:

- **SDG 2: Zero Hunger**
- **SDG 4: Quality Education**
- **SDG 5: Gender Equality**
- **SDG 16: Peace, Justice, and Strong Institutions**

CEREMONIE DE REMISE DE MOYENS ROULANTS AUX PARTENAIRES

Projet: Amélioration des moyens de subsistance et de la sécurité alimentaire par la formation à l'agriculture et l'artisanat climato-intelligents ; par des relations pacifiques et l'interdépendance économique entre les communautés

Région de SEGOU, Cercles de Bla, Macina et Ségou
07 Juillet 2023
www.RET
Bridging the Gaps in Africa. The Americas. Asia. Europe. The Middle East.





Mali

- Capital: Bamako
- Population: 21.9 million
- GDP per capita: USD 833.30

2022 RET began operations | 1 Projects | 19.4K Program participants

Projects have focused on:

-  Economic growth and development
Vocational training
-  Gender equality and social inclusion
-  Nutrition and food security
-  Peace, stability, and transition

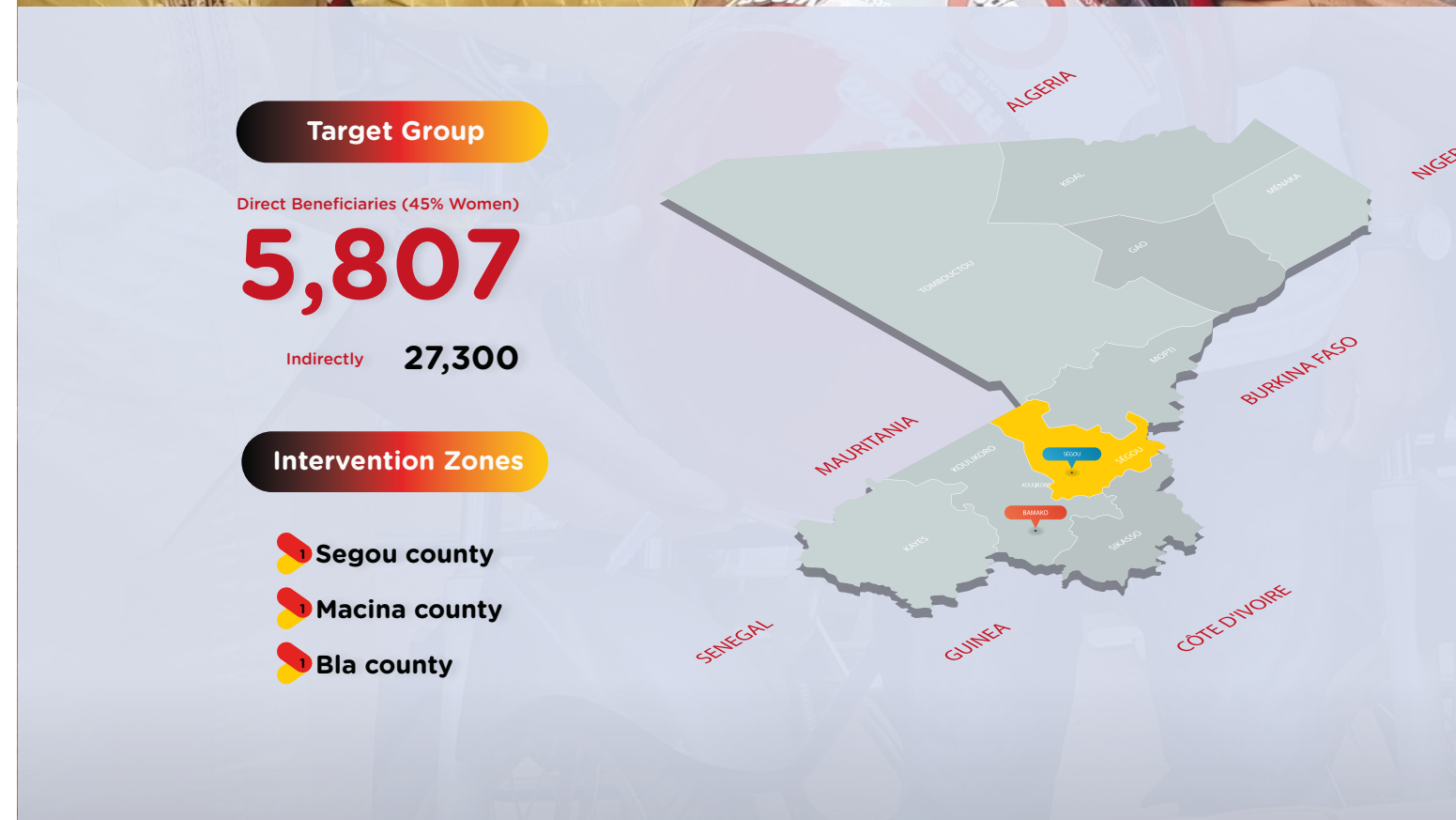
Mali is a landlocked West African country, and while its territory reaches deep into the Sahara Desert, most of the population lives in the southern part of the country in the Sudanian savanna. The last decade has been turbulent, with armed conflict breaking out in early 2012, followed by a military coup. Since then, insurgencies have gathered pace, and two more coups (2020 and 2021) have taken place, the first of which overthrew the civilian government. The withdrawal of French troops in 2022 has made the security situation even more tenuous, with the Islamic State occupying large areas of southeast Mali.

Despite many challenges, Mali has one of the youngest populations in the world with a median age of just 16 years old. However, nearly 20% of the population suffers from food insecurity and 42% live below the poverty line. Nearly a quarter of Malian children are malnourished. Combined with natural disasters and armed conflict, Mali is at a critical juncture. RET is proud to have launched operations in the country in late 2022, directly supporting tens of thousands of program participants with a project that includes three pillars:

1. Employability and income opportunities
2. Food security
3. Peaceful community relations

Our current project will run through 2025 and focuses on empowering vulnerable women and youth in the Segou region through vocational training, business management as well as agricultural practices courses, and conflict mediation committees. In Mali, we have collaborated with government agencies, training centers, and local civil society organizations like ALPHALOG and REFOR to realize this project.^[1]

[1] This project is funded by the German Federal Ministry for Economic Cooperation and Development (BMZ) and implemented by RET Germany in partnership with ALPHALOG and REFOR.



The projects being implemented in Mali contribute to the following Sustainable Development Goals:

- SDG 2: Zero Hunger
- SDG 4: Quality Education
- SDG 5: Gender Equality
- SDG 8: Decent Work and Economic Growth
- SDG 10: Reduced Inequalities
- SDG 16: Peace, Justice, and Strong Institutions





> Niger

- Capital: Niamey
- Population: 25.3 million
- GDP per capita: USD 533.00

2021
RET began operations

5
Projects

5.3K
Program
participants

Projects have focused on:



Education and capacity building



Nutrition and food security



Peace, stability, and transition



Protection



Health and WASH

Niger is a West African country that shares a border with seven other countries: Algeria, Libya, Chad, Nigeria, Benin, Burkina Faso, and Mali. The country boasts one of the fastest growing and youngest populations in the world: Nearly 60% are under the age of 18. However, the World Bank estimates that 41.8% (around 10 million people) are living in extreme poverty, and the nation has been the destination for large numbers of refugees from Nigeria and Mali. This, coupled with a volatile security situation, low literacy and education levels, decreases in agricultural outputs, and climate change and natural disasters have made the country a key priority for RET in recent years.



DID YOU KNOW?

Niger is also among the world's countries with the lowest girls' enrollment, retention, and school completion rates. According to UNICEF, 2.5 million children and adolescents are out of school, and only 19% of girls in rural areas complete primary education. The low female education rates directly translate to long-term gender inequality and systematic social and economic disempowerment of women.

In 2021, RET began working to promote girls' access to quality education and empower women in the Tillabéri region by improving girls' enrollment and retention rates in schools, raising awareness in communities about the importance of girls' education and women's empowerment, and improving women's income generation through training and support. ^[1]



In the Diffa region, we are working with refugees and displaced persons to improve their livelihoods and economic inclusion amidst insecurity from armed groups. By developing market gardening, supporting fish farmers in aquaculture feed production, and enhancing income-generating activities through training, cash grants, and financial inclusion initiatives, RET has helped create socioeconomic opportunities, reduce vulnerability, and improve self-reliance in one of the most fraught environments. ^[2]

[1] This project is funded by the German Federal Ministry for Economic Cooperation and Development (BMZ) through 2024. It is being implemented in partnership with the local organization "Soutien aux ONG, SongES."

[2] The project will be implemented in partnership with UNHCR from January to December 2023.



The projects being implemented in Niger contribute to the following Sustainable Development Goals:

- **SDG 2:** Zero Hunger
- **SDG 3:** Good Health and Well-Being
- **SDG 4:** Quality Education
- **SDG 16:** Peace, Justice, and Strong Institutions

Bridging the Gaps





RET'S WORK BY COUNTRY

RET Americas

Reduciendo las Brechas
RET

> Peru

- Capital: Lima
- Population: 33.7 million
- GDP per capita: USD 7,125.80

2018
RET began operations

11
Projects

70K
Program
participants
10K program
participants in
2022

Projects have focused on:



Education and capacity building



Health and WASH



Protection
Including humanitarian aid

Peru is a South American country that borders Ecuador, Colombia, Brazil, Bolivia, and Chile, and has an extensive coast along the Pacific Ocean. In recent years, it has seen a dramatic rise in asylum applications in (upwards of 20,000 in 2017), many fleeing the economic crisis in Venezuela. This influx of people has increased risks for violence, trafficking, and exploitation, as well as caused economic strain as families seek to make a living.

RET first began working in Peru in 2018, and over the past year, in collaboration with UNICEF, we have focused on increasing the educational inclusion of migrant and refugee children and adolescents in Tumbes through a project called Compartimos+. The program (which will continue through 2023) has targeted upwards of a thousand girls and boys, as well as their teachers, principals, and schools, and seeks to improve the access to- and quality of education. ^[1]

In the metropolitan Lima and Callao, RET is working to reach more than 3,000 Venezuelan migrants and refugees to improve their quality of life. In coordination with the Ministry of Health, this program is fostering coordination between host communities and families of refugees and migrants. In part a response to the pandemic, it has wider-reaching goals and will prioritize diversity and inclusion, with special attention to highly vulnerable refugees and migrants, such as children and adolescents, pregnant women, the LGBTQI+ community, and people living with HIV/AIDS. ^[2]

It aims to ensure that:

- People affected by crises have access to quality primary health care.
- People affected by crises have access to hygiene measures to prevent COVID-19.
- Crisis-affected populations can meet their basic needs.

[1] This project is being financed by the U.S. Department of State's Bureau of Population, Refugees, and Migration (BPRM), is being led by UNICEF, and implemented by RET locally in Peru.

[2] This project was implemented from January to September 2022 and was financed by European Commission Humanitarian Aid and Civil Protection (ECHO), led by IRC and implemented by RET.



The projects being implemented in Peru contribute to the following Sustainable Development Goals:

- **SDG: Good Health and Well-Being.**
- **SDG 4: Quality Education**
- **SDG 10: Reduced Inequalities**

RET International's Organizational Structure

RET Germany's Organizational Structure

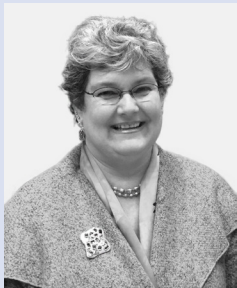


The RET International Board - Geneva



**President & CEO
of RET International**
Ms Zeynep Gündüz

The RET Germany e.V Board - Berlin



**President & CEO
of RET Germany**
Ms Zeynep Gündüz



**Mr Thierry Galissard
de Marignac
Chair**

Former Partner
at Banque
Mirabaud & Cie



**Mr James Russo
Treasurer**

Former CFO of CHF
International (Now
Global Communities)
for development and
humanitarian assistance
projects. 25 years of
experience in domestic
and international
non profit financial
management.



**Ms Zeynep Gündüz
Board Member**

RET's Chief Executive
since 2003, Former
senior and executive
management of Fortune
500 multinational
corporations of the
automotive and
telecommunications
sectors



**Mr Anne Willem
Bijleveld
Chair**

Former Director,
Division of External
Relations and Director
of Europe at UNHCR
Personal Envoy of the
High Commissioner for
the Western Balkans



**Ms Zeynep Gündüz
Vice Chair**

RET's Chief Executive
since 2003, Former
senior and executive
management of Fortune
500 multinational
corporations of the
automotive and
telecommunications
sectors



**Mr Jens Forkert
Treasurer**

Attorney at law/
Tax consultant/
CPA, Partner of
Duske, Becker &
Sozien



**Mr Jean-Claude
Peterschmitt
Board Member**

Former Chairman of
Digital Equipment
Corporation -
Europe

Former Chair of RET



**Mrs Anne-Shelton
Aaron
Board Member**

Co-founder of the
Museum of Modern
and Contemporary
Art of Geneva



**Dr Frank
Nagelschmidt
Secretary**

Attorney at Law,
Partner at SES
Attorneys at Law
Berlin



**Dr Bahadır Engin
Co-Vice Chair**

Human Resources
management;
Executive Social Policy
and Employment -
industrial & Labour
relations. Ph.D. in Social
Policy and Employment
- Working Conditions
and Occupational
Accidents.



RET Americas Organizational Structure

The RET Americas Inc.
Board - Washington DC



President & CEO
of RET Americas
Ms Zeynep Gündüz



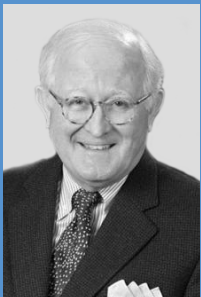
Ms Zeynep Gündüz
Chair

RET's Chief Executive since 2003, Former senior and executive management of Fortune 500 multinational corporations of the automotive and telecommunications sectors



Mr James Russo
Treasurer

Former CFO of CHF International (Now Global Communities) for development and humanitarian assistance projects. 25 years of experience in domestic and international non profit financial management



Mr Alan P. Dye
Secretary

Partner at Webster, Chamberlain & Bean, LLP specialized in the representation of non-profit organizations



Mrs Anne-Shelton
Aaron
Board Member

Co-founder of the Museum of Modern and Contemporary Art of Geneva



Ms Zeynep Gündüz
President & CEO at RET

Senior Management
Reporting to RET's CEO

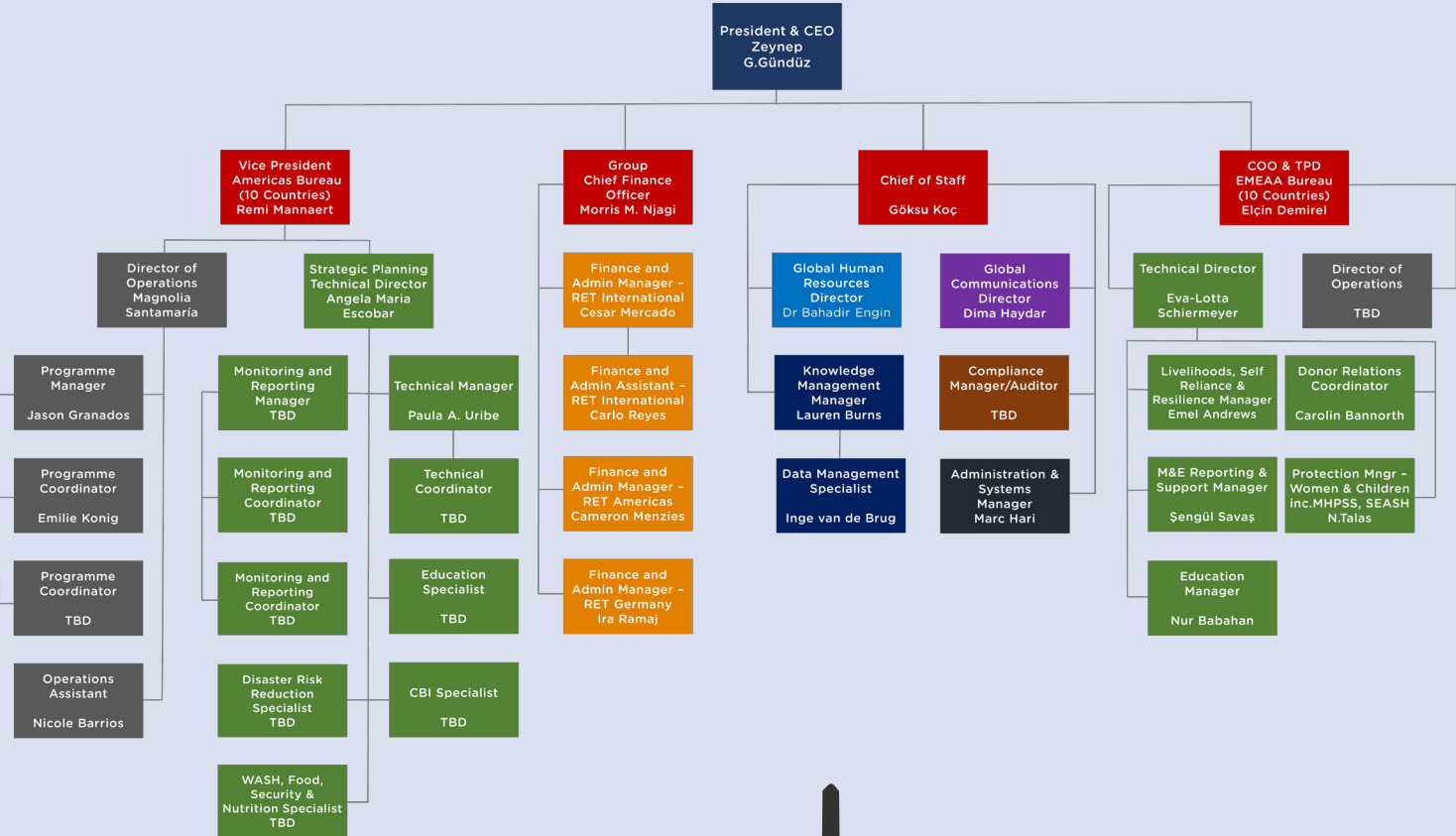
RET Americas: Remi Mannaert
Vice- President - Americas Bureau

Morris Muriithi NJAGI
Chief Finance Officer

Göksu KOC
Chief of Staff

Elcin Demirel
Chief Operations Officer & Technical
Program Development - EMEAA Bureau

RET HQ Organization Chart



List of RET Donors and Partners

Bridging the Gaps



Thank You!

Governments

[Australia](#) – Australian Agency for International Development - AUSAID

[Kingdom of Belgium](#) – Ministry of Foreign Affairs

[Canada](#) – Department of Foreign Affairs, Trade and Development - DFATD, International Humanitarian Assistance Division (IHA)

[Colombia](#) – Ministry of Education and the Government of Antioquia

[Denmark](#) – Ministry of Foreign Affairs

[United Kingdom](#) – Department of International Development - UKaid, DFID and FCO

[Japan](#) – Embassy of Japan in the Islamic Republic of Afghanistan, Embassy of Japan in Lebanon, Embassy of Japan in Türkiye

[France](#) – Ministry Of Foreign Affairs

[Germany](#) – Federal Foreign Office, the Federal Ministry for Economic Cooperation and Development (BMZ), The German Embassy in Costa Rica.

[Luxembourg](#) – Ministry of Foreign Affairs

[Norway](#) – Royal Ministry Of Foreign Affairs

[Principality of Liechtenstein](#) – Office of Foreign Affairs

[Sweden](#) – Ministry Of Foreign Affairs

[Switzerland](#) – City of Basel, Canton of Basel-Landschaft, Republic and Canton of Geneva, Ville de Genève, Swiss Development Cooperation (SDC)

[The Netherlands](#) – Ministry Of Foreign Affairs

[United Kingdom](#) – FCO – UK Embassy in Türkiye

[United States of America](#) – Department of State – BPRM, Department of State – CARSI, Bureau for Humanitarian Assistance (BHA) (formerly known as Office of Foreign Disaster Assistance OFDA), Department of State – GWI – Global Women's Issues and WE Americas

Intergovernmental Institutions

[ECHO](#) – EU – European Civil Protection and Humanitarian Aid Operations – ECHO

[UNDP](#) – The United Nations Development Programme

[UNESCO](#) – The United Nations Educational, Scientific and Cultural Organisation

[UNHCR](#) – The UN Refugee Agency

[UNICEF](#) – The United Nations Children's Fund

[UNFPA](#) – United Nations Population Fund

[IOM](#) – International Organisation for Migration

[WHO](#) – The World Health Organisation

[OCHA](#) – Office for the Coordination of Humanitarian Affairs

Private Sector, Corporate and Personal Foundations & Private Individuals

Alfred Herrhausen Society

Alistair Pilkington Trust

Arthur Anderson SA, Geneva

Asfari Foundation

Banque Cantonale de Genève

Barbara Hendricks Foundation for Peace and Reconciliation

CARAES (BE)

Civil Society Organizations for Disaster Reduction (GNDR)

Council for Better Corporate Citizenship, Japan

Credit Suisse

Delta Airlines

Deutsche Gesellschaft für Internationale Zusammenarbeit – GIZ

Ecopetrol

Education Cannot Wait

Ernst & Young

Ford Foundation

Goldman Sachs Foundation

Hewlett-Packard Company Foundation

Intercontinental Hotel Hospitality Tokyo

International Council of Nurses

International Ladies Benevolent Society, Japan

Jagaimo-no-Kai

Japan Centre for Conflict Prevention (JCCP)

Japan Committee for Refugee Relief (JCRR)

Japan Ladies Tennis Federation

Keidanren

National Geographic

NHK Japan Broadcasting Corp, USA

Nike

Nikko Salomon Smith Barney

Sacred Heart University Students

Sammy Corporation, Japan

Seoul Peace Prize Cultural Foundation

Shell International

Shinnyo-en Youth Association

Star Dancers Ballet Foundation

Swiss Solidarity (Chaîne du Bonheur)

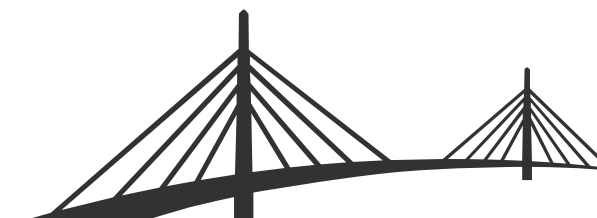
Telefónica, Ecuador

The Swatch Group, Japan

UBS Optimus Foundation

University of Georgia

[Private individual donors from France, Japan, The Netherlands, Switzerland, Türkiye, the United Kingdom and the United States.](#)



Bridging the Gaps



RET's Institutional Engagements at Global level

UNHCR

- Member of the Secondary Education Working Group

Global Refugee Forum - UNHCR

- Member of the Education Working Group
- Member of the Durable Solutions Working Group

The G-7 Global Task Force

- Member of the G-7 Education Working Group
- Member of the G-7 Gender Working Group
- Member of the G-7 Peace & Security Working Group

The Youth Compact in Humanitarian Action

- Member of the Task Team for Action 1:
Promote and increase age- and gender-responsive and inclusive programs that contribute to the protection, health, and development of young women, young men, girls, and boys within humanitarian settings.

Member of GADRRRES – Global Alliance for Disaster Risk Reduction & Resilience in the Education Sector.

IOM - International Organization for Migration

- Member of the Civil Society Organizations (CSOs) working group

The Alliance for Child Protection in Humanitarian Action

- Member of Unaccompanied and Separated Children Task Force
- Member of Family Strengthening Task Force
- Member of Assessment, Measurement and Evidence Working Group

INEE – International Network for Education in Emergencies

- Member of the Standards & Practice Working Group (2004+)
- Member of the Policy Education Working Group (2018+)
- Member of the Alternative Education Work Stream
- Steering Committee (2010 – 2017) Co-chair with the World Bank and IRC from 2012-2016.
- Member of the Youth & Prevention of Violent Extremism Group (2017-18)
- Co-convener of the INEE's Adolescents and Youth Task Team (2005+)

Education Cannot Wait Fund

- Member of the Educational Technical Task Team
- Member of Civil Society Organizations (CSO's) Northern Group

RECI – Réseau Suisse Education et Coopération Internationale

- Member of the RECI Executive Board (2015+)

Global Education Cluster

- Member of the Strategic Advisory Group (2017+)

ICVA – International Council of Voluntary Agencies

- Member of the Humanitarian & Development Nexus Group

RET Alliance

RET HQs Offices



RET Americas

1747 Pennsylvania Ave NW
Ste 1000, Washington, DC
200064636
info@RETAmericas.org
[RETAmericas.org](mailto:info@RETAmericas.org)



RET Germany

Lychener Straße 79
10437 Berlin, Germany
info@RETGermany.org
[RETGermany.de](mailto:info@RETGermany.org)



RET International

Rue de Saint-Jean 34,
1203 Geneva, Switzerland
+41 22 775 05 22
info@theRET.org
[theRET.org](mailto:info@theRET.org)

Main National Offices

RET in Belize

5916 Manatee Drive Buttonwood, Bay, Belize City, Belize
info.Belize@RETAmericas.org

RET au Burundi

Rohero - Mukaza, 11, Av Kirimiro, Bujumbura
info.Burundi@theRET.org

RET in Colombia

Calle 25A No.37-12, Bogotá D.C., Colombia
info@RETColombia.org

RET in Costa Rica

San José, Montes de Oca, San Pedro, Barrio Los Yoses, de la Iglesia de Fátima, 100 Este, 50 Sur, San José, Costa Rica
info.Costa-Rica@RETAmericas.org

RET in DR Congo

Avenue Félix TSHISEKEDI, N° 64
Quartier Himbi, Goma, North Kivu - DRC

RET in Ecuador

Marco Aguirre OE4-81 y Av. Brasil, Quito - Ecuador
info.Ecuador@RETAmericas.org

RET in Kenya

Agencies Compound 3, Kakuma-Turkana County, Kenya
info@RETKenya.org

RET in Lebanon

Plot No 5977 /No. 16 - Badaro Street, Beirut, Lebanon

RET in Mali

Hamdallaye ACI 2 000, Bamako - Mali
info@theRET.org

RET Bureaus and Administrative Centers

RET EMEAA Bureau

Büyükesat Mahallesi, Uğur Mumcu
Caddesi, No: 55, D:7, Çankaya, Ankara
SilkRoute@theRET.org

RET Latin America & The Caribbean Bureau

Evelio Lara Street, Office 135 AB,
City of Knowledge, Panama.
info.LAC@RETAmericas.org

Local/National NGOs (LNNGOs)

GATE Lebanon

Shukri Shoucair Street, Assad Eid Building, 3rd floor,
Geatawi Ashrafieh, Beirut, Lebanon
info@GATE.org

LEAP Türkiye

Büyükesat Mahallesi, Uğur Mumcu
Caddesi, No: 55, D:7, Çankaya, Ankara
info@LEAP.org.tr

RET in Mauritania

KSAR ZRC 402 Nouakchott, Mauritania
Info.Mauritania@theRET.org

RET au Niger

Nouveau pavé, Quartier Dar Es Salam, Niamey
info@RETniger.org

RET in Mexico

3ra. Avenida Norte
#1 entre Primera y Central Oriente Colonia Centro
C.P.30710, Tapachula, Chiapas, México
info@RETMexico.org

RET in Panama

Calle Elvira Mendez - Edificio Vallarino
Ciudad de Panamá, Panama
info@RETPanama.org

RET in Peru

Calle Coronel Andres Reyes 338,
San Isidro, Lima, Perú
info.Peru@RETAmericas.org

RET in Türkiye

Büyükesat Mahallesi, Uğur Mumcu
Caddesi, No: 55, D:7, Çankaya, Ankara
SilkRoute@theRET.org

RET in Venezuela

Av Rómulo Gallegos, Centro Empresarial Millenium Mall,
piso 4, oficina 4-01.
Los Dos Caminos. Caracas, Venezuela
info.Venezuela@RETAmericas.org



2022

RET Alliance Financial Statements

AS AT DECEMBER 31, 2022

RET ALLIANCE CONSOLIDATED FINANCIAL POSITION Balance Sheet

	2022 ALLIANCE USD	2021 ALLIANCE USD
ASSETS		
Current assets		
Cash	1,331,223	1,007,311
Total cash and cash equivalents	1,331,223	1,007,311
Prepaid expenses/advances to field offices	2,111,414	2,530,751
Trade receivables	16,920	228,559
Other receivables & accrued income	196,015	49,367
Total prepaid and other receivables	2,324,348	2,808,677
Total current assets	3,655,571	3,815,988
Fixed assets		
Fixed assets	59,979	61,271
Accumulated depreciation	(59,363)	(58,739)
Total fixed assets	616	2,532
Investments for future projects	123,736	123,736
Accumulated depreciation	(74,241)	(49,494)
	49,495	74,242
TOTAL ASSETS	3,705,682	3,892,761
LIABILITIES AND FUNDS		
Current Liabilities		
Line of credit	977,330	994,961
Trade payables	5,906	-
Accrued salaries and social charges	11,160	72,987
Other payables including accrued liabilities	148,793	240,730
Local trade creditors	579,999	554,261
Commitments related to the projects	2,110,709	2,306,780
Total liabilities	3,833,897	4,169,720
Capital of the Alliance / Unrestricted funds		
Retained Earnings	(378,536)	120,964
Capital of the Alliance	50,000	57,723
Surplus/(deficit)	200,320	(455,646)
Total unrestricted funds	(128,215)	(276,959)
TOTAL LIABILITIES AND FUNDS	3,705,682	3,892,761

RET ALLIANCE CONSOLIDATED INCOME STATEMENT

Statements of Financial Performance

	2022 ALLIANCE USD	2021 ALLIANCE USD
REVENUES		
Restricted income	16,467,554	15,506,807
Unrestricted income	1,263,534	640,739
Total income	17,731,087	16,147,547
EXPENSES BY OPERATIONS		
Operations	(15,317,890)	(14,142,926)
Development, External Relations & Administration	(2,062,808)	(1,766,209)
Total expenses	(17,380,698)	(15,909,135)
Operating surplus	350,390	238,412
FINANCIAL RESULTS		
Interest income on deposits	253	(1,733)
Losses / (gains) on currency conversion	(59,759)	(80,848)
Bank fees and interest expense	(52,125)	(38,204)
Net financial result	(111,631)	(120,785)
RESULT FOR THE YEAR BEFORE EXTRAORDINARY EXPENSES PRIOR YEARS	238,758	117,627
EXTRAORDINARY EXPENSES PRIOR YEARS	(38,438)	(349,019)
RESULT FOR THE YEAR	200,320	(231,392)

We thank all of our key stakeholders – our host country government partners, donors – government, institutional, and private, RET staff, volunteers, the communities where we work, the elders, the families, the educators, and the young people affected by displacement, violence, armed conflict, and disasters, for their support of RET’s programs and RET’s team, and for designing, delivering, monitoring, evaluating, improving the interventions that we bring with the passion and commitment to excellent quality and success necessary for the vital and sustainable future of all the regions where we are fortunate to be represented.

Bridging the Gaps



RET International Annual Report & Audited Financial Statements 2021
Copyright RET 2023 ©

RET International
Geneva, Switzerland

All pictures by RET©
info@theRET.org
theRET.org - RETGermany.de - RETAmericas.org

RET International



@theRETorg



@theRETorg



@RET International



@RET International

RET Germany



@RETGermanyOrg



@RETGermany

RET Americas



@RETAmericas



@RETAmericas



theRET.org RET-
Germany.de
RETAmericas.org
RETYKD.org.tr